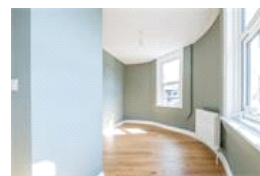
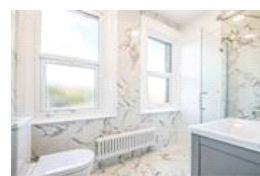
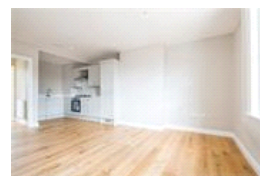


Perry Vale , SE23 (1 bedroom Flat)

£1,500/month



**Photo  
coming  
soon**

**Photo  
coming  
soon**

**Photo  
coming  
soon**

**Photo  
coming  
soon**

**Photo  
coming  
soon**

## property description

Newly refurbished to a high standard is this superb one-bedroom flat on the second floor of this charming Victorian building that sits on a corner plot just behind Forest Hill Station. The flat benefits from brand new kitchen with integrated appliances, a new boiler and a stylish shower room. The location of the property couldn't be more ideal as it's in the heart of Forest Hill surrounded by array of amenities including an amazing Deli on the ground floor. This flat is a commuter's dream! The entrance can be found to the side of the building which gives access to a newly refurbished communal hallway and staircase that leads up to the front door of the flat. Upon entry there is a...

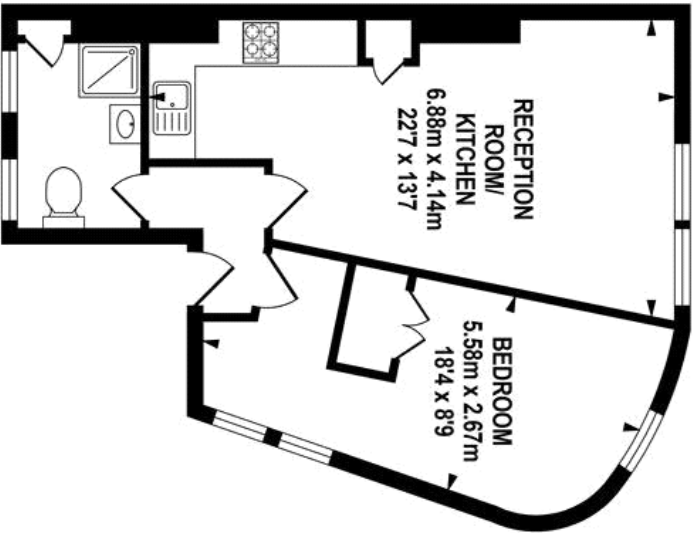
## property features

- Newly refurbished one bedroom flat
- High quality finish throughout
- Charming Victorian conversion
- Double glazing in the reception room and
- Brand new kitchen with integrated appliances
- Luxurious shower room
- Solid oak wood flooring
- Unfurnished. Available ASAP

ALPS Estates Ltd trading as Pickwick Estates  
47 Honor Oak Park Honor Oak  
London, SE23 1EA, United Kingdom  
Reg No : 7444750  
Registered in England

Telephone : 020 3397 1166  
Website : <https://www.pickwickestates.co.uk>





SECOND FLOOR  
APPROX. FLOOR  
AREA 41.46 SQ.M.  
(446 SQ.FT.)



TOTAL APPROX.FLOOR AREA 41.46 SQ.M. (446 SQ.FT.)

Whilst every effort is made to accurately reproduce these floor plans, measurements are approximate, not to scale and for illustrative purposes only.  
© Duwich Energy Assessors Ltd. [www.dea-ld.co.uk](http://www.dea-ld.co.uk)

For Full EPC information, click [here](#)