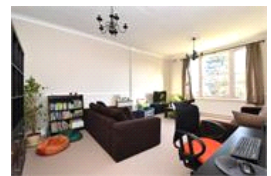


Mayow Road, SE26 (2 bedroom Flat)

£575,000



### property description

An exceptionally spacious two double bedroom first floor split level flat measuring 1342 sq ft, located directly opposite Mayow Park with stunning views from the front. The property benefits from its own section of rear garden, off road parking and eaves storage. The accommodation comprises of two spacious double bedrooms, a huge kitchen breakfast room which overlooks the park, a lounge and an impressive mezzanine level which would make a fantastic work from home space. Mayow Road is a lovely residential street which is well positioned for access to Sydenham, Forest Hill and Penge East stations and other local amenities. The property is being sold with a lease of 106 years..

### property features

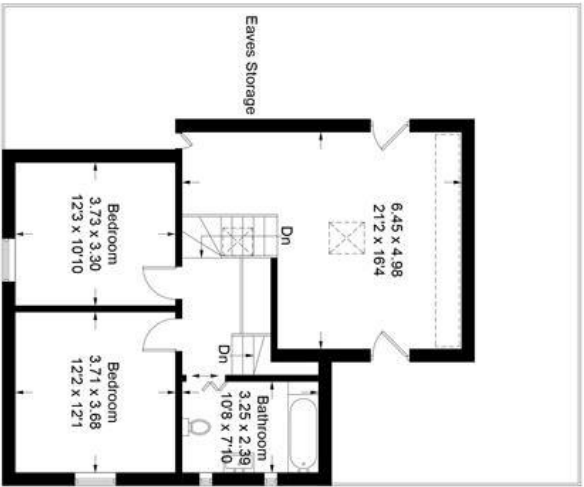
- Spacious two double bedroom split level flat

Mayow Road, SE26 (2 bedroom Flat)

£575,000

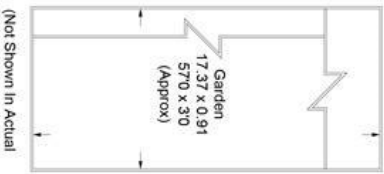


Mayow Road



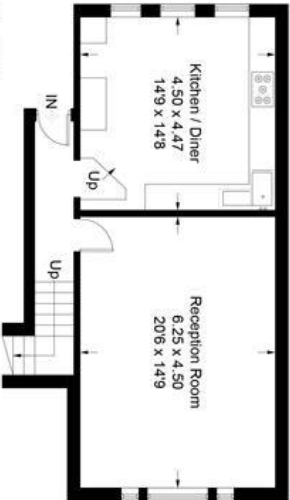
Approximate Gross Internal Area  
124.7 sq m / 1342 sq ft

- Reduced bedroom  
Below 1.5m / 5'0"



(Not Shown in Actual  
Location / Orientation)

Second Floor



First Floor

Illustration for identification purposes only.  
measurements are approximate.  
Drawn for Benjamin Matthews

For Full EPC information, click [here](#)