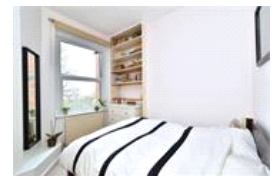
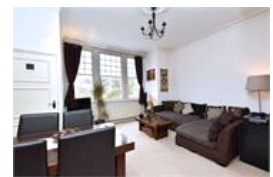


Belle Vue Court, SE23 (1 bedroom Flat)

£1,400/month



property description

AVAILABLE END OF FEBRUARY 2024. UNFURNISHED. Sit proudly on Devonshire Road is this stylish one double bedroom flat, set on the first floor of this handsome red brick mansion block. The flat benefits from access to a large communal garden at the rear, communal bike shed and is within very close proximity to Forest Hill station (0.3m, London Bridge and Overground connections). The property offers plenty of period features and charm with high ceilings and large original sash windows. As you approach the building you are immediately impressed by the striking red brick Victorian façade, period detailing and large sash windows. The entrance to the flat is located on the first floor from the main hallway. As you enter there is a generous hallway leading to all the rooms. The lounge is at the front of the building and offers generous proportions with enough space for a good size sofa and dining table. The room has nice high ceilings with cornicing, the floors are carpeted and there is a set of three large original wooden framed sash bay windows that floods the room with natural ...

property features

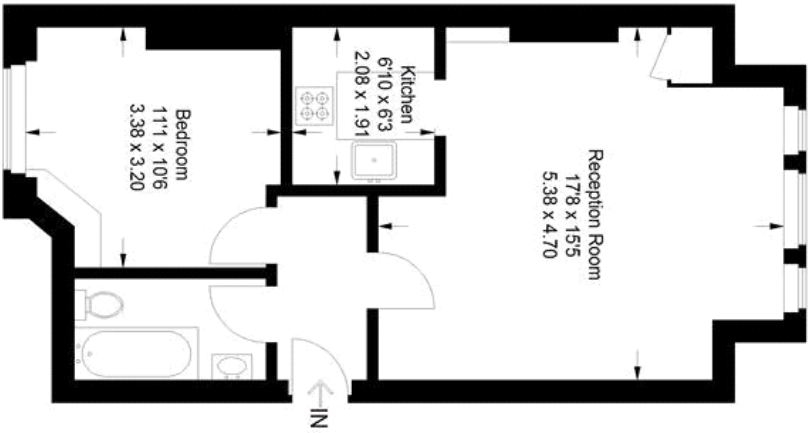
- Stylish one bedroom first floor flat
- AVAILABLE END OF FEBRUARY 2024. UNFURNISHED
- Communal gardens and bike store
- Council tax band B
- Handsome and well maintained red brick Victorian mansion block
- Spacious reception room with high ceilings and sash windows
- Fully fitted kitchen

ALPS Estates Ltd trading as Pickwick Estates
47 Honor Oak Park Honor Oak
London, SE23 1EA, United Kingdom
Reg No : 7444750
Registered in England

Telephone : 020 3397 1166
Website : <https://www.pickwickestates.co.uk>



Devonshire Road



First Floor



Approximate Gross Internal Area
480 sq ft / 44.6 sq m

Illustration for identification purposes only,
measurements are approximate.
Drawn for Pickwick Estates.

Score	Energy rating	Current	Potential
92+	A		
81-91	B		
69-80	C		
55-68	D	67 D	77 C
39-54	E		
21-38	F		
1-20	G		

For Full EPC information, click [here](#)