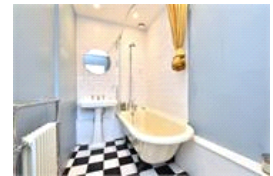
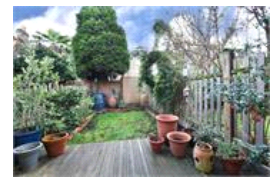


Ebsworth Street , SE23 (1 bedroom Flat)

£425,000 (OIEO)



property description

A superb, well-proportioned, one-bedroom garden flat being sold with a SHARE OF FREEHOLD and a private SOUTHWEST facing rear garden. Occupying the ground floor of this handsome red brick Victorian half house located in a quiet residential street in the heart of Honor Oak Park close to the station and local amenities. The house has an imposing red brick facade and a small front garden shielding it from the street. Upon entry, there is a communal hallway leading to the front door of the flat. At the front of the property is a generous reception room occupying the width of the house. It retains many period features such as high ceilings with cornicing, original stripped and varnished wooden floorboards, a period fireplace with built in cupboards and shelves in the alcoves and a square sash bay window that fills the room with natural light. The bedroom is very well-proportioned sharing similar features to the reception with stripped original floorboards and a feature fireplace. A large sash window looks out to the garden via the side return. At the end of the internal hal...

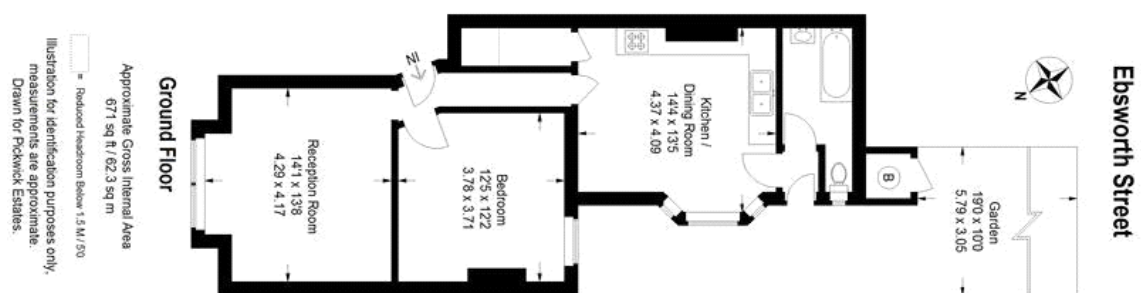
property features

- A superb, well-proportioned, one-bedroom garden flat with a private SOUTHWEST facing rear garden
- Occupying the ground floor of this handsome red brick Victorian half house
- Period features
- Original stripped and varnished wooden floorboards throughout
- Generous reception room with lots of period features
- Large main bedroom

ALPS Estates Ltd trading as Pickwick Estates
47 Honor Oak Park Honor Oak
London, SE23 1EA, United Kingdom
Reg No : 7444750
Registered in England

Telephone : 020 3397 1166
Website : <https://www.pickwickestates.co.uk>





For Full EPC Information, click [here](#)