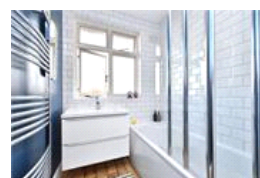
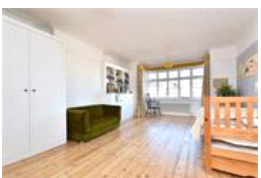
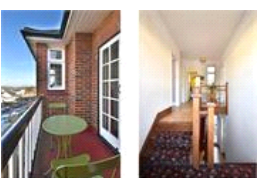
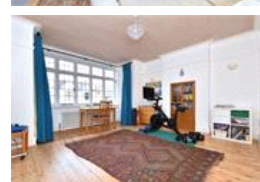
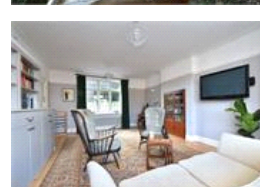
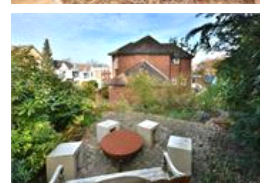
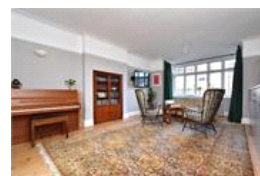


Canonbie Road , SE23 (3 bedroom House)

£1,150,000 (OIEO)



property description

Perched up high, on the popular Canonbie Road, offering stunning views over the London Skyline, is this well-proportioned, 1930's DETACHED 3 double bedroom family home. The house sits on a large plot of land and benefits from off street parking, an integrated garage and a South Easterly facing rear garden that wraps around the house. The house is in good decorative condition throughout having been updated by the current owner and comes with planning consents for a loft conversion and side/rear extension. This handsome double fronted house is utterly unique with an imposing, statuesque red brick façade, offering an abundance of 1930's period features and a front facing balcony above the p...

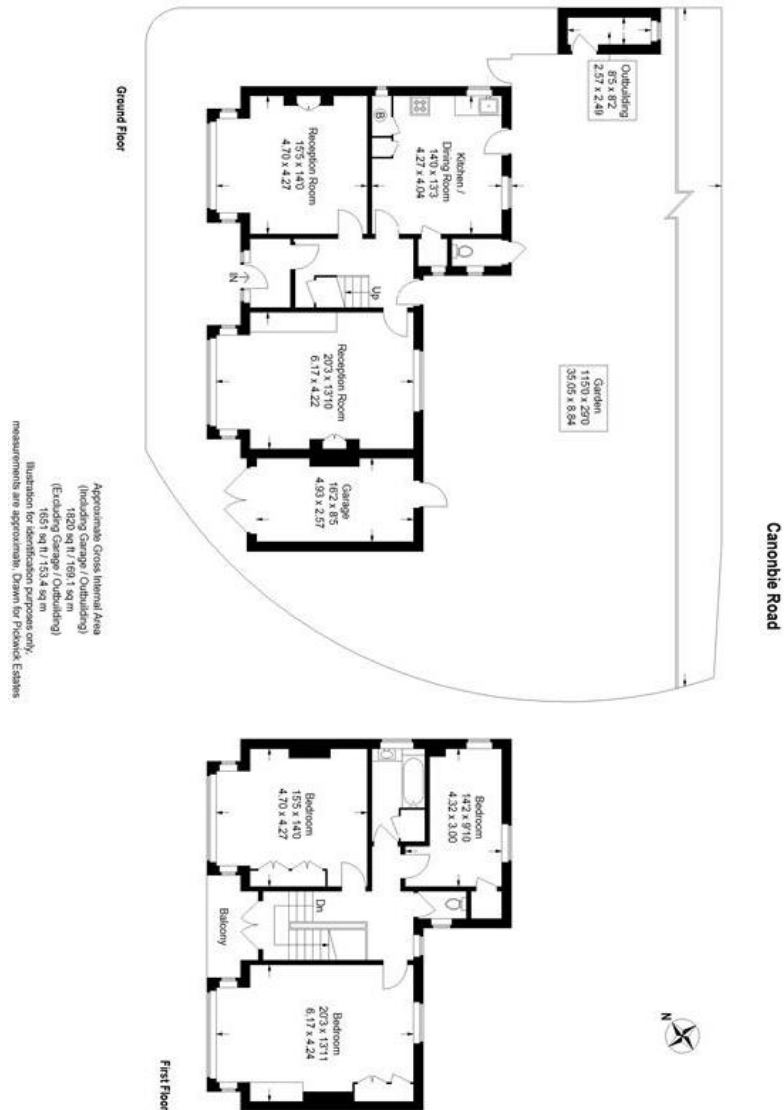
property features

- 3 double bedroom DETACHED 1930's family home
- Situated on a large plot with South East facing rear garden that wraps around the house
- Off street parking, a garage and a brick built shed
- Two large receptions rooms
- Kitchen dining room
- Front facing balcony
- Planning permission for a loft conversion

ALPS Estates Ltd trading as Pickwick Estates
47 Honor Oak Park Honor Oak
London, SE23 1EA, United Kingdom
Reg No : 7444750
Registered in England

Telephone : 020 3397 1166
Website : <https://www.pickwickestates.co.uk>





For Full EPC information, click [here](#)