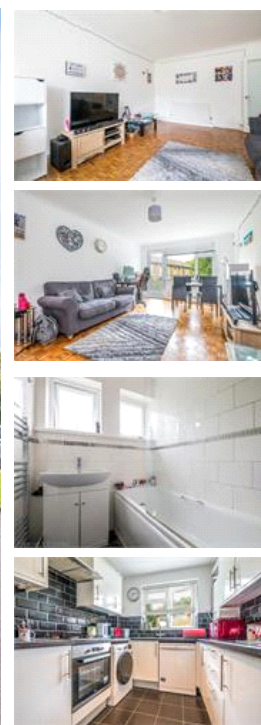


Embassy Gardens, BR3 (2 bedroom Flat)

£1,350/month



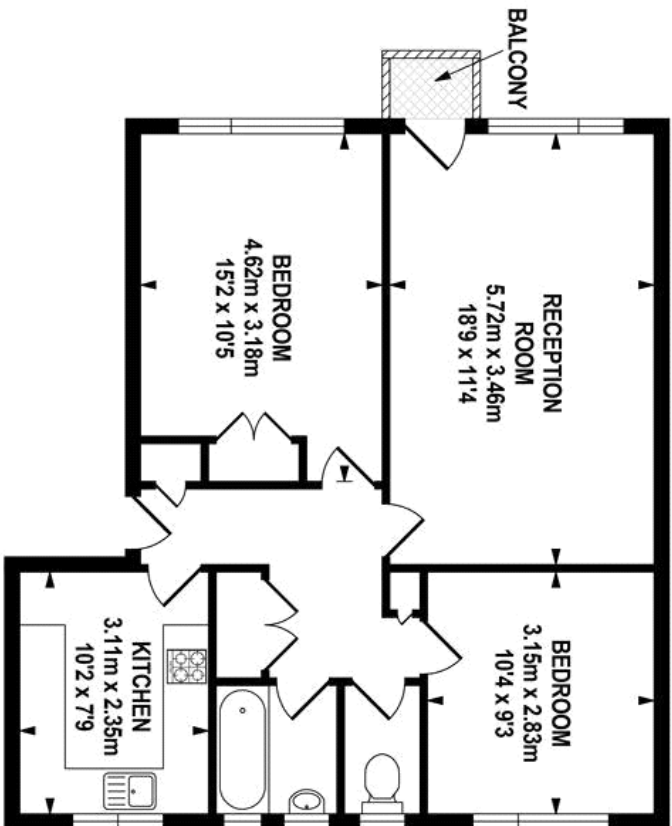
property description

A nicely presented two bedroom on the first floor of this well maintained, mid century block of flats. The property is well proportioned and is in good condition throughout. Features include a balcony off the reception room and varnished parquet flooring throughout most of the flat. Upon entry there is a generous hallway with plenty of storage. A bright and spacious reception room has plenty of natural light from the window and patio door that leads to the balcony. The separate modern kitchen provides ample space for the keenest of culinary enthusiasts while the double bedrooms are laid out sensibly and well serviced by the bathroom which is fully tiled, has a heated towel rail and there is a separate toilet. Beckenham Junction BR and Tramline are just a short walk away as are the multitude of bars, restaurants and shopping amenities in Central Beckenham.

property features

- Nicely presented two bedroom first floor flat
- Private balcony
- Well maintained mid century block of flats
- Fitted kitchen
- Double glazing throughout
- Varnished Parquet flooring
- Reception room with balcony
- Communal gardens





FIRST FLOOR
APPROX. FLOOR
AREA 66.32 SQ.M.
(714 SQ.FT.)



TOTAL APPROX.FLOOR AREA 66.32 SQ.M. (714 SQ.FT.)

Whilst every effort is made to accurately reproduce these floor plans, measurements are approximate, not to scale and for illustrative purposes only.
© Dulwich Energy Assessors Ltd. www.dea-ld.co.uk

For Full EPC Information, click [here](#)