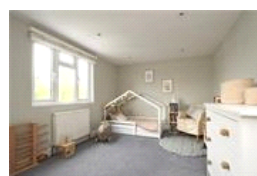
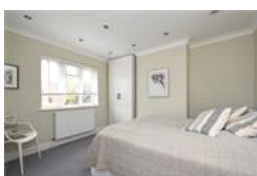
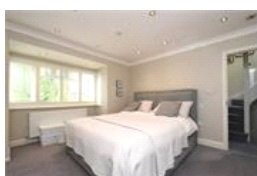
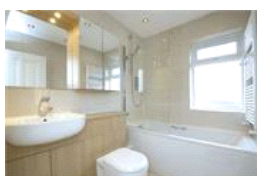
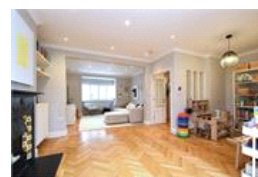
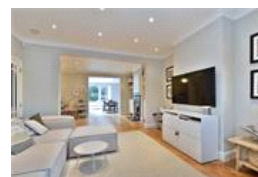


Barry Road , SE22 (5 bedroom House)

£4,300/month



## property description

NOT SUITABLE FOR SHARERS. Pickwick estates are delighted to present new to the market a rarely available detached family house in central East Dulwich. The property is beautifully presented and decorated throughout. Downstairs there is a large double reception room with beautiful parquet wood floor and a feature fireplace, leading through to a family kitchen/breakfast room and then out to a south east facing garden, there is also a downstairs cloakroom. Upstairs there are five bedrooms, four are good size doubles one with an en-suite plus a further single/study room and a family bathroom. Barry Road is ideally located in East Dulwich for transport to central London and plenty of sought after...

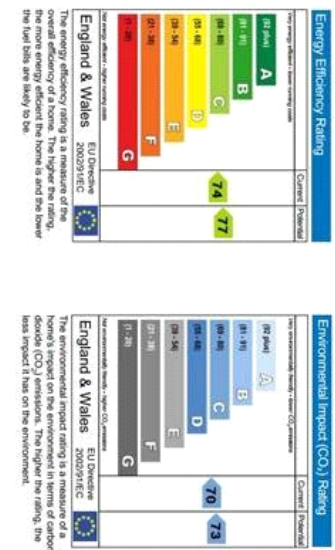
## property features

- 5 double bedrooms
- 3 bathrooms
- Beautifully presented throughout
- Close to transport
- Off street parking
- Detached property
- Walking distance to shops and amenities
- Fireplaces in front rooms

ALPS Estates Ltd trading as Pickwick Estates  
47 Honor Oak Park Honor Oak  
London, SE23 1EA, United Kingdom  
Reg No : 7444750  
Registered in England

Telephone : 020 3397 1166  
Website : <https://www.pickwickestates.co.uk>





For Full EPC information, click [here](#)