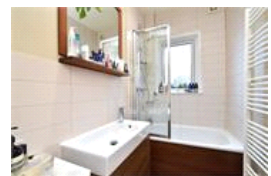
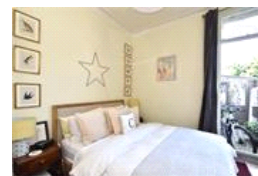
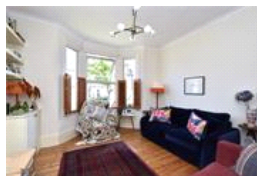
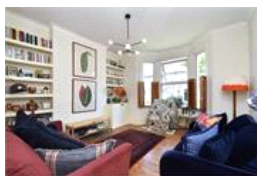
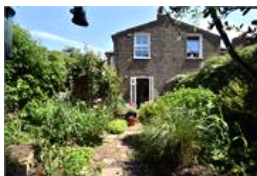


Crofton Park Road, SE4 (1 bedroom Flat)

£425,000 (OIEO)



property description

Occupying the whole ground floor of this pretty end of terrace Victorian conversion, is this utterly charming, one bedroom garden maisonette. The flat benefits from its own private entrance on the side of the house, where there is a nice walled and gated courtyard. This intimate space is a perfect landing area upon arrival, handy for bringing in bikes and general storage. There is also a very useful lean-to conservatory which has been cleverly adapted into a utility room which houses the washing machine and drier. Upon entry you are greeted by a lovely kitchen dining room that is oozing with character and charm. The kitchen runs along one side of the room allowing plenty of space for ...

property features

- Utterly charming one bedroom garden maisonette
- End of terrace Victorian conversion
- Magical mature private rear garden that is an oasis of tranquillity
- Walled and gated courtyard entrance
- Lean-to conservatory utility room/workshop/store
- Generous reception room with high ceilings and

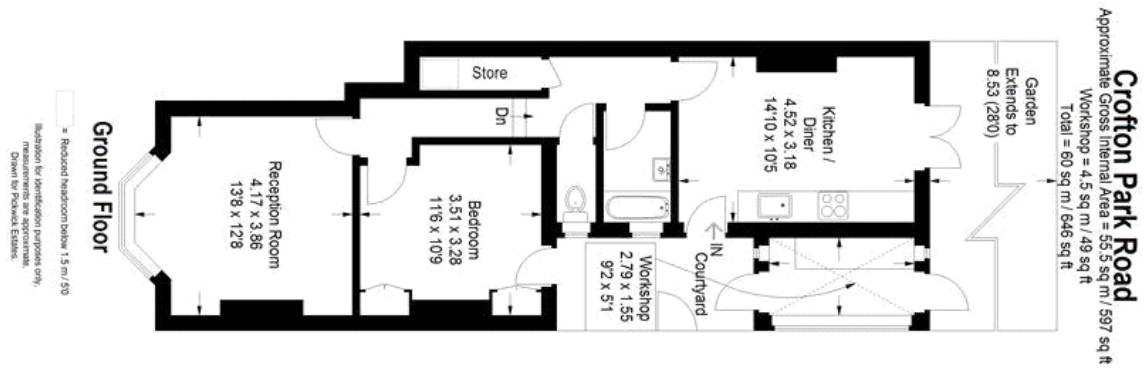
ALPS Estates Ltd trading as Pickwick Estates
47 Honor Oak Park Honor Oak
London, SE23 1EA, United Kingdom
Reg No : 7444750
Registered in England

Telephone : 020 3397 1166
Website : <https://www.pickwickestates.co.uk>



Crofton Park Road, SE4 (1 bedroom Flat)

£425,000 (OIEO)



For Full EPC information, click [here](#)