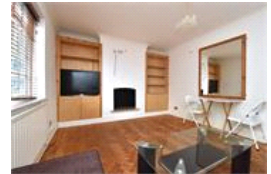
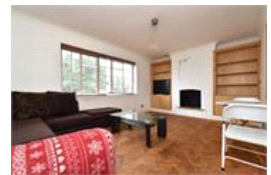


Upper Elmers End Road, BR3 (1 bedroom Flat)

£1,250/month



## property description

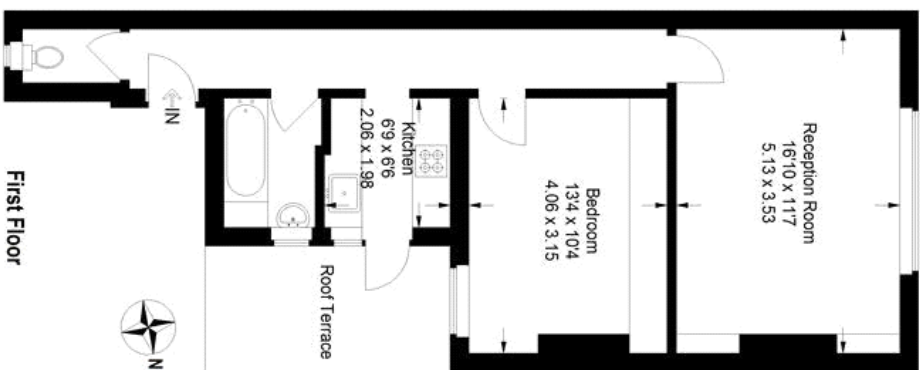
Spacious and well looked after one bedroom flat, set on the first floor of this 1930s block. The property briefly comprises entrance hall with entry phone, wooden parquet flooring throughout, large reception room, spacious double bedroom, fully fitted bathroom, separate WC and a neat kitchen with all the mod cons leading to a private balcony facing the rear of the building. The property is within a 5 minute walk of Elmers End rail station which will whisk you into London Bridge in 20mins. Good bus routes and the tram to Croydon are well within walking distance as well as there being an array of local amenities such as shops and the local supermarket. Available immediately!

## property features

- Spacious 1 double bedroom, 1st floor flat
- Reception room with parquet flooring
- Entry phone system
- Parquet wood flooring
- Fully fitted bathroom
- Kitchen with all the mod cons leading to a private balcony
- Within 5mins walk to the rail station (20mins to London Bridge) and tram into Croydon
- Double glazing



## Upper Elmers End Road



For Full EPC Information, click [here](#)

Approximate Gross Internal Area  
547 sq ft / 50.8 sq m  
Illustration for identification purposes only,  
measurements are approximate.  
Drawn for Pickwick Estates.