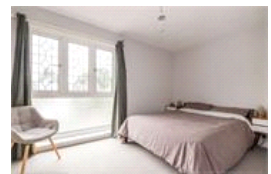
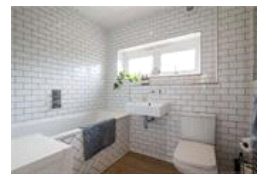
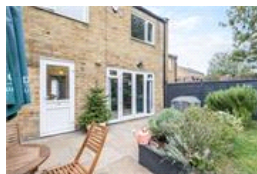
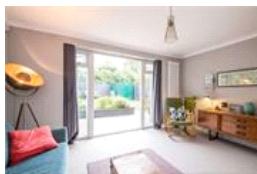


Foxborough Gardens , SE4 (3 bedroom House)

£2,350/month



property description

NOT SUITABLE FOR SHARERS. A beautifully presented three-bedroom, freehold mid-century family home in a quiet residential cul-de-sac in Crofton Park, bordering Ladywell, in close proximity Ladywell Fields and Hilly Fields. Boasting a SOUTH FACING private rear garden, a large reception with direct access to the garden, double glazing throughout, eat in kitchen diner, utility room and a stylish family bathroom. The house is set back from the street by a gated front garden and the house overlooks a green communal lawn. Upon entry there is a generous entrance hall with space for hanging coats and storing shoes. Solid wooden flooring runs seamlessly through to the kitchen and to the handy util...

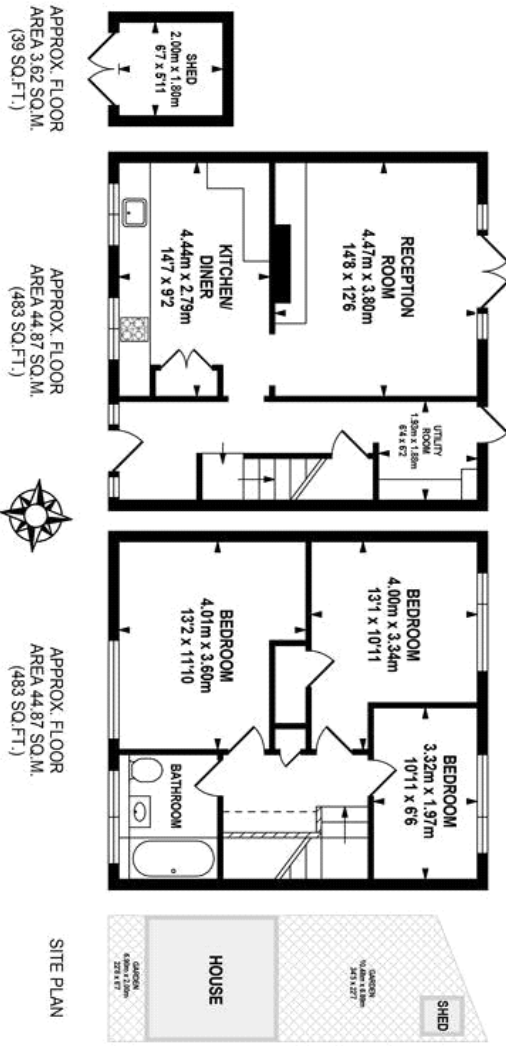
property features

- A beautifully presented three-bedroom, freehold mid-century family home
- Quiet residential cul-de-sac in Crofton Park
- SOUTH FACING private rear garden
- Large reception room
- Kitchen dining room
- Utility room
- NOT SUITABLE FOR SHARERS

ALPS Estates Ltd trading as Pickwick Estates
47 Honor Oak Park Honor Oak
London, SE23 1EA, United Kingdom
Reg No : 7444750
Registered in England

Telephone : 020 3397 1166
Website : <https://www.pickwickestates.co.uk>





 pickwick estates

TOTAL APPROX FLOOR AREA 93.36 SQ.M. (1005 SQ.FT.)

Whilst every effort is made to accurately reproduce these floor plans, measurements are approximate, and to scale and for illustrative purposes only.
© Duwich Energy Assessors Ltd. www.dewild.co.uk

Score	Energy rating	Current	Potential
92+	A		
81-91	B		
69-80	C	70 C	84 B
55-68	D		
39-54	E		
21-38	F		
1-20	G		

For Full EPC information, click [here](#)

