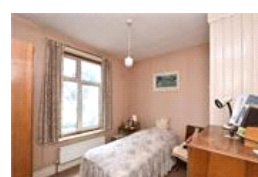
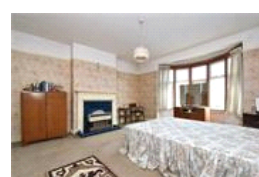
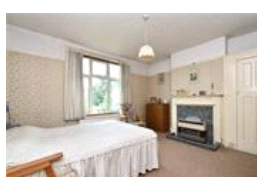
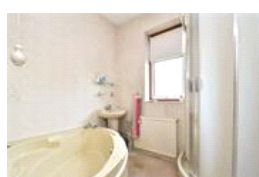
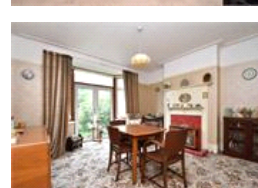
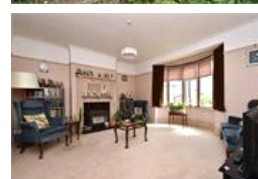


Grierson Road, SE23 (3 bedroom House)

£850,000 (OIEO)



## property description

If you are looking for a refurbishment project this 3 double bedroom, 1930's mid terrace family home will be right up your street! Located in the heart of Honor Oak only 160 metres from the station and the amenities of the high street! The house has a larger than average footprint, approximately 7 meters wide! It benefits from a large 21 meter (65ft) private rear garden with a westerly facing aspect, double glazing throughout and is being sold CHAIN FREE. The house retains many of its original features including beautiful ornate fireplaces and internal porch doors in the hallway. The front of the house has an attractive façade with traditional bay windows on the ground and first flo...

## property features

- 3 double bedroom 1930's mid terrace family home
- Generous private rear garden approximately 21 Metres (65ft).
- Requiring refurbishment throughout , potential for
- Larger than average footprint - approximately 7 metres wide.
- Retaining period features such as original fireplaces

ALPS Estates Ltd trading as Pickwick Estates  
47 Honor Oak Park Honor Oak  
London, SE23 1EA, United Kingdom  
Reg No : 7444750  
Registered in England

Telephone : 020 3397 1166  
Website : <https://www.pickwickestates.co.uk>





Score	Energy rating	Current	Potential
92+	A		
81-91	B		
69-80	C		
55-68	D	68   D	
39-54	E		
21-38	F		
1-20	G		

For Full EPC information, click [here](#)