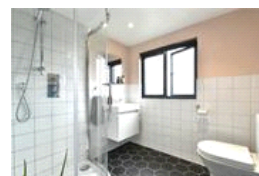
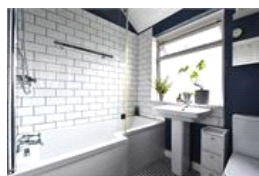
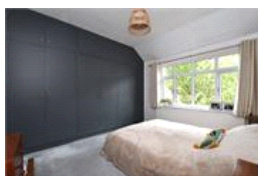
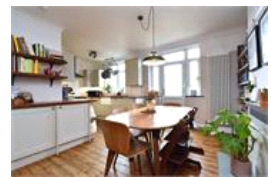


Cliffview Road , SE13 (4 bedroom House)

£840,000



property description

VIEWING DAY SATURDAY 28th JANUARY 10am - 12pm - A beautifully presented four-bedroom mid terrace freehold family home with a neatly landscaped private rear garden and spectacular views over Canary Wharf and Lewisham, just a few minutes from the glorious Hilly Fields, near Ladywell Conservation Area. A truly lovely house in a fantastic community-spirited street, with annual street parties. You're well-connected too; it's an eight-minute walk to Ladywell, St John's and Lewisham stations (Lewisham has the DLR as well as regular services, St John's is 8 minutes to London Bridge). Crofton Park and Brockley are also short walks away. The property has been carefully and sympathetically refurb...

property features

- A beautifully presented four-bedroom mid terrace family home
- Neatly landscaped private rear garden and a front garden
- Just a few minutes walk from Hilly Fields
- Large double reception room
- Lovely kitchen dining room
- Luxurious family bathroom

ALPS Estates Ltd trading as Pickwick Estates
47 Honor Oak Park Honor Oak
London, SE23 1EA, United Kingdom
Reg No : 7444750
Registered in England

Telephone : 020 3397 1166
Website : <https://www.pickwickestates.co.uk>





Score	Energy rating	Current	Potential
92+	A		
81-91	B		
69-80	C	69 C	85 B
55-68	D		
39-54	E		
21-38	F		
1-20	G		

For Full EPC information, click [here](#)