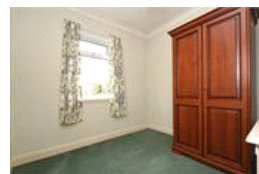
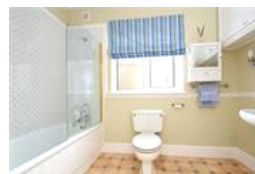
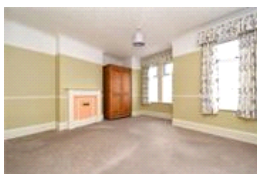
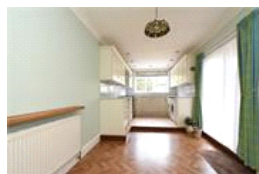
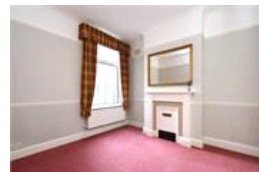
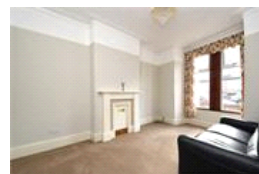
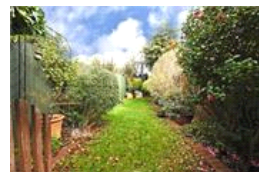


Nyon Grove , SE6 (3 bedroom House)

£635,000 (OIEO)



## property description

A beautifully presented 3-bedroom, mid terraced Victorian family home offering 1110 sqft (103.2 sqm) of internal floor space, double glazing throughout, a well maintained 57ft private rear garden and a gardening shed. The house is located on this peaceful residential street in the heart of Forest Hill, offering easy access to transportation, plenty of local amenities and access to good local schools such as the Outstanding Kilmore primary. The house is set back from the street by a walled front patio with a pathway leading to the house. The façade is an attractive exposed brick Victorian house with detailed masonry above the windows and front porch. Upon entry there is a hallway offe...

## property features

- A beautifully presented 3-bedroom, mid terraced Victorian family home
- Offering 1110 sqft (103.2 sqm) of internal floor space
- Two reception rooms
- Kitchen dining room
- Victorian period property with character
- Double glazing throughout, gas safety ce...

ALPS Estates Ltd trading as Pickwick Estates  
47 Honor Oak Park Honor Oak  
London, SE23 1EA, United Kingdom  
Reg No : 7444750  
Registered in England

Telephone : 020 3397 1166  
Website : <https://www.pickwickestates.co.uk>





Score	Energy rating	Current	Potential
92+	A		
81-91	B		
69-80	C		
55-68	D	59   D	86   B
39-54	E		
21-38	F		
1-20	G		

For Full EPC information, click [here](#)