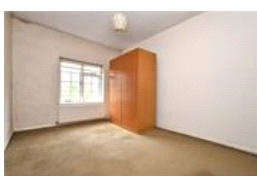
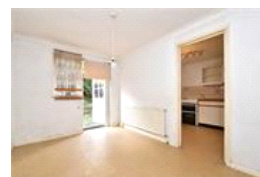
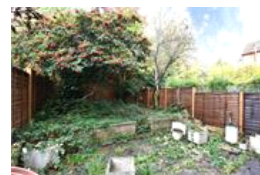


Sydenham Avenue , SE26 (4 bedroom House)

£650,000 (OIEO)



**Photo
coming
soon**

property description

Offering plenty of internal floor space and set over three floors is this superb four-bedroom end of terrace townhouse that requires updating throughout. Standing proudly on this sought-after green and leafy residential road, virtually opposite Crystal Palace Park. The house also benefits from off street parking, a garage and a private West facing garden as well as being conveniently located and with a choice of quick links into Central London via a choice of several train stations - Penge East and West, Sydenham and Crystal Palace. Thanks to its East West orientation, the house brings in an abundance of natural light. It is set well back from the street by a large driveway and private g...

property features

- Attractive 4 bedroom end of terrace townhouse
- 3 story freehold house
- End of terrace
- Family bathroom and modern suite shower
- Private West facing rear garden
- Garage and off street parking
- Quiet leafy residential street
- Kitchen and dining room

ALPS Estates Ltd trading as Pickwick Estates
47 Honor Oak Park Honor Oak
London, SE23 1EA, United Kingdom
Reg No : 7444750
Registered in England

Telephone : 020 3397 1166
Website : <https://www.pickwickestates.co.uk>





For Full EPC information, click [here](#)