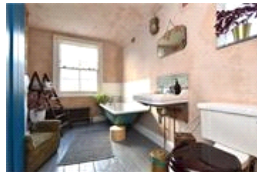
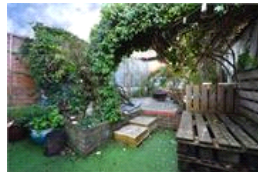
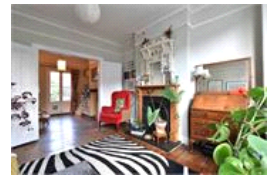


Holdenby Road , SE4 (4 bedroom House)

£800,000 (OIEO)



property description

A charming end of terrace 4-bedroom Victorian family home, located in the heart of Crofton Park within minutes of the station as well as local shops of the bustling high street and highly rated schools. This beautiful home offers bright and spacious accommodation that is arranged over three floors, including a recent loft conversion which has increased the internal living accommodation to 1395 square feet. There is also a driveway, a cellar and a lean to in the side return, both of which offer excellent additional storage as well as access from the front of the house to the rear. The house has a typically attractive Victorian façade with exposed bricks and detailed masonry around the w...

property features

- A charming end of terrace 4-bedroom Victorian family home
- Private rear garden
- Side return access with a large lean to for additional outside storage
- Off street parking and a cellar
- Kitchen dining room
- Double reception room
- Family bathroom

ALPS Estates Ltd trading as Pickwick Estates
47 Honor Oak Park Honor Oak
London, SE23 1EA, United Kingdom
Reg No : 7444750
Registered in England

Telephone : 020 3397 1166
Website : <https://www.pickwickestates.co.uk>





For Full EPC information, click [here](#)