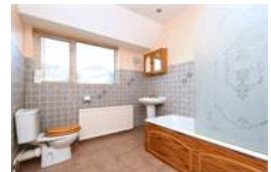


Ringmore Rise , SE23 (4 bedroom House)

£900,000



## property description

Perched on top Ringmore Rise with stunning views over the London Skyline is this lovely SEMI-DETACHED 4-bedroom family home in need of some modernisation. The house sits on a wide plot with a front garden, incorporating off street parking, an integrated garage and a large private WEST FACING rear garden measuring 33ft x 33ft. Offered to the market CHAIN FREE! Sunsets from up here are breath-taking throughout the year! This charming 1930's house has a charming white painted façade and double-glazed windows throughout. The house is set back from the street with a driveway that slopes slightly towards the property and bordered by a lawn with mature trees and shrubs. There is a side retu...

## property features

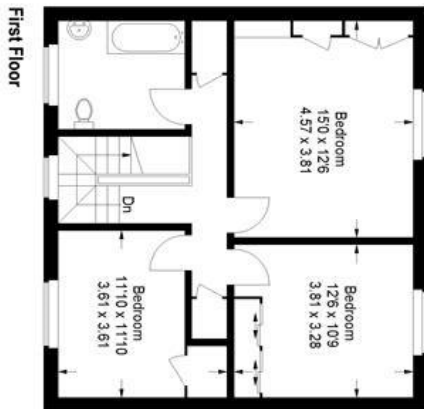
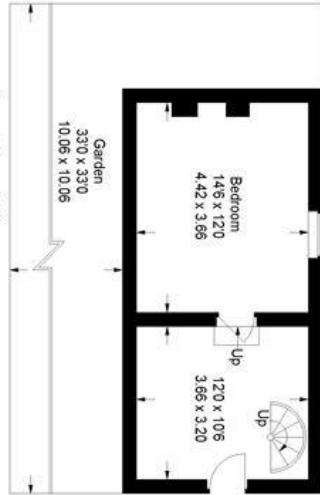
- SEMI DETACHED 4 bedroom 1930's family home on three floors with spectacular views of London
- Set on a wide plot with a front and rear private garden and side return access
- WEST FACING rear garden offering stunning views and amazing sunsets!
- Double reception room with a balcony and views over the London Skyline

ALPS Estates Ltd trading as Pickwick Estates  
47 Honor Oak Park Honor Oak  
London, SE23 1EA, United Kingdom  
Reg No : 7444750  
Registered in England

Telephone : 020 3397 1166  
Website : <https://www.pickwickestates.co.uk>



Ringmore Rise



Approximate Gross Internal Area  
 (Including Garage)  
 1678 sq ft / 155.9 sq m  
 (Excluding Garage)  
 1346 sq ft / 143.6 sq m

Illustration for identification purposes only, measurements are approximate.  
 Drawn for Pickwick Estates.

For Full EPC information, click [here](#)