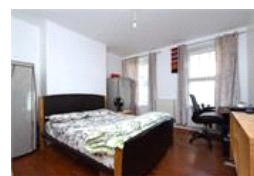
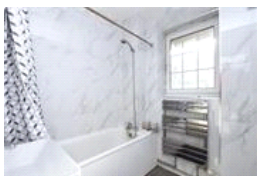
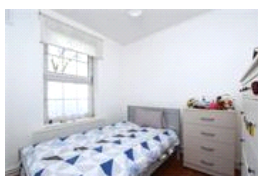
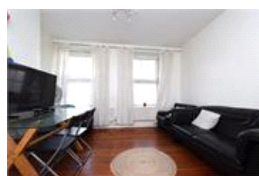
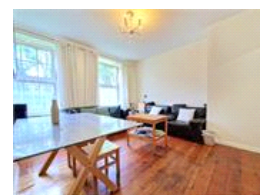


Nickleby House, SE16 (2 bedroom Flat)

£500,000



**Photo
coming
soon**

property description

Offered to the market as CHAIN FREE is this spacious and well laid out 2 double bedroom, 1 bathroom, ground floor flat located within the Jacob Island location of Shad Thames and a short walk away from Bermondsey tube station. The property benefits from a large and bright sitting room with original exposed floorboards, a good size separate kitchen, a modern bathroom and a separate guest WC. Shad Thames is a desirable location along the banks of the River Thames, steeped in history and enchanting character. A variety of bars and restaurants are within walking distance, as is the popular design museum. The area is very accessible and whilst many residents walk across Tower Bridge into the...

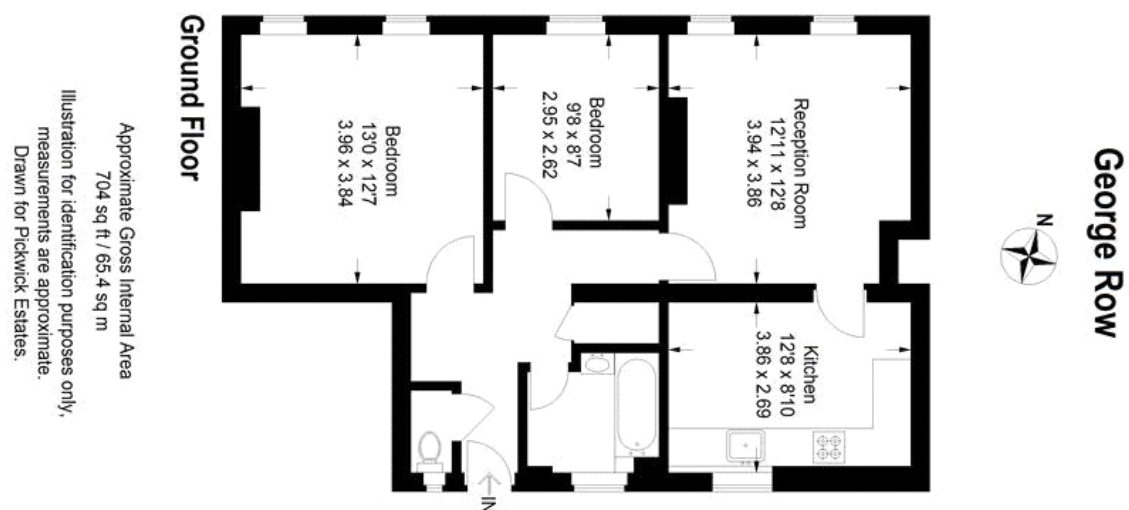
property features

- CHAIN FREE
- 2 double bedrooms with original exposed floorboards
- Modern bathroom
- Good size fully fitted kitchen
- Large lounge with exposed floorboards

ALPS Estates Ltd trading as Pickwick Estates
47 Honor Oak Park Honor Oak
London, SE23 1EA, United Kingdom
Reg No : 7444750
Registered in England

Telephone : 020 3397 1166
Website : <https://www.pickwickestates.co.uk>





For Full EPC information, click [here](#)