

Woodwarde Road, SE22 (5 bedroom House)

£4,500/month



property description

This beautifully freshly decorated five-bedroom period home is situated in a sought-after location, close to Dulwich Village and Dulwich Park. The property boasts spacious living areas, including two large reception rooms, a fully fitted kitchen with brand-new appliances, and a downstairs WC. The highlight of the home is the generous 100ft rear garden, perfect for families and outdoor entertaining. Upstairs, you'll find four double bedrooms, one single bedroom, a family bathroom, and a separate WC, offering ample space for comfortable living. Available immediately, this charming home is perfect for families looking to settle in a prime location with excellent schools, green spaces, and transport links nearby.

property features

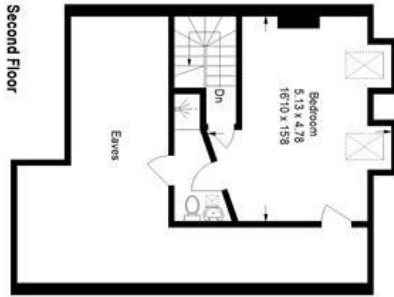
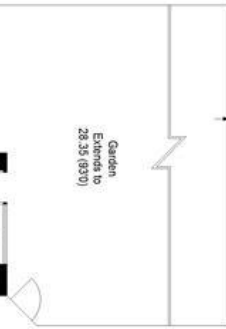
- Freshly decorated
- 5 (4 doubles, 1 single)
- 2 Reception rooms
- 100ft Garden
- Excellent links to central London
- Council Tax Band G

ALPS Estates Ltd trading as Pickwick Estates
8 Woodwarde Road Dulwich
London, SE22 8UJ, United Kingdom
Reg No : 4270797
Registered in England

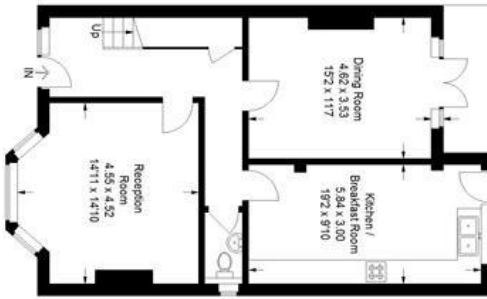
Telephone : 020 3397 1144
Website : <https://www.pickwickestates.co.uk>



Woodwarde Road



Second Floor



Ground Floor



First Floor

Approximate Gross Internal Area
(Excluding Eaves)
166.1 sq m / 1788 sq ft
Illustration for identification purposes only;
measurements are approximate.
Drawn for Pickwick Estates.

For Full EPC information, click [here](#)