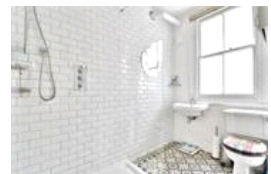
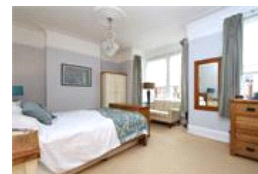
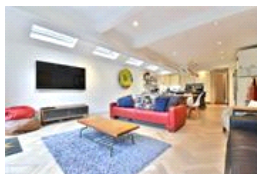
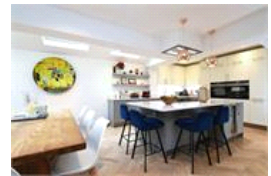
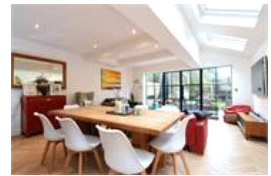


Beauval Road , SE22 (4 bedroom House)

£4,500/month



property description

Offering a blend of period character with a contemporary twist is this magnificent four double bedroom Victorian family home. The property benefits from a recently landscaped front and rear garden, a stunning rear kitchen/reception room extension, family bathroom accompanied by a shower room and an en-suite in the loft conversion and a ground floor utility room with a guest WC. Beauval road is a very sought after quiet residential road in a highly desirable Dulwich Village location and just a short walk to Dulwich park and the amenities of Lordship Lane. The nearest stations are North Dulwich and East Dulwich offering regular services into central London. The house has great kerb ap...

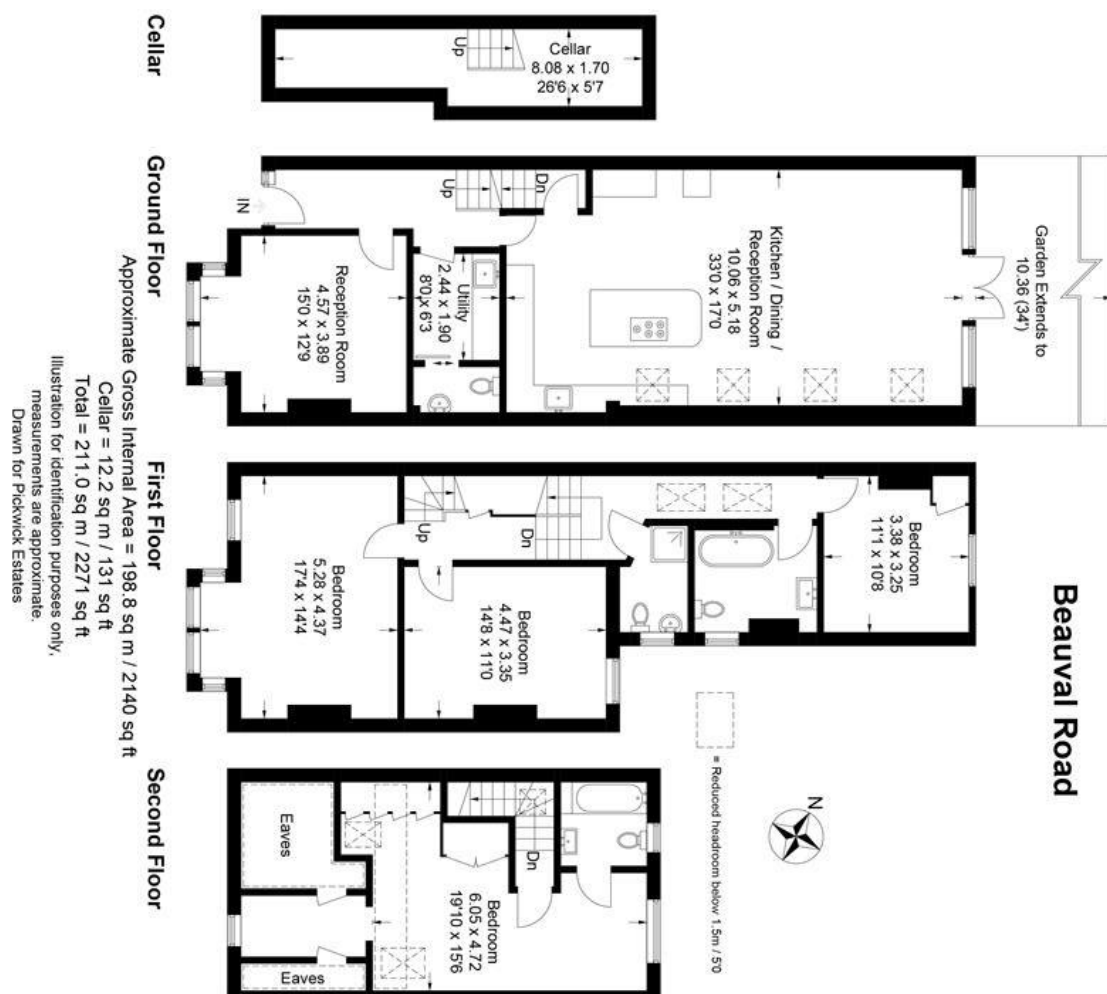
property features

- Four bedroom double bedroom Victorian family home
- Desirable Dulwich Village location
- AVAILABLE NOW
- Stunning rear kitchen/dining/reception room extension
- Family bathroom, shower room and en-suite shower room in the loft conversion

ALPS Estates Ltd trading as Pickwick Estates
47 Honor Oak Park Honor Oak
London, SE23 1EA, United Kingdom
Reg No : 7444750
Registered in England

Telephone : 020 3397 1166
Website : <https://www.pickwickestates.co.uk>





Score	Energy rating	Current	Potential
92+	A		
81-91	B		
69-80	C		
55-68	D	60 D	78 C
39-54	E		
21-38	F		
1-20	G		

For Full EPC information, click [here](#)