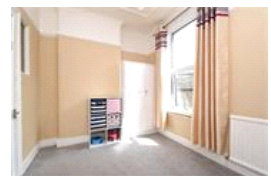
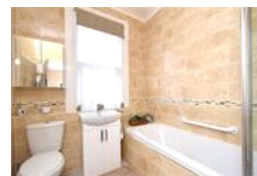
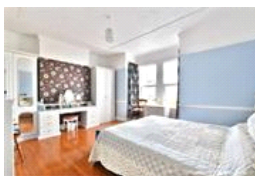
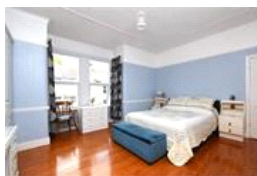
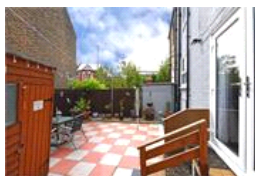
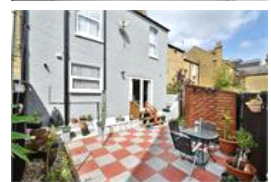
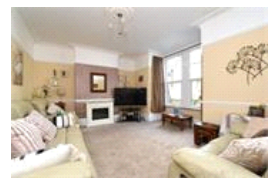


Garthorne Road, SE23 (3 bedroom House)

£750,000



property description

A unique and well-maintained Victorian 3 bedroom family home, situated in a popular no through residential road in the heart of Honor Oak Park. The house is wider than most Victorian terraced houses and therefore has a wide hallway, a large lounge, a kitchen dining room, utility room with guest toilet all on the ground floor. It also benefits from being within 400 meters of Honor Oak Park station, has double glazed sash windows throughout and a private rear garden. The house is set back from the street by a neat front garden shielded by a wall with a gate and a pathway leading to a classic arched period porch. On the ground floor there is a wide entrance hall which has storage unde...

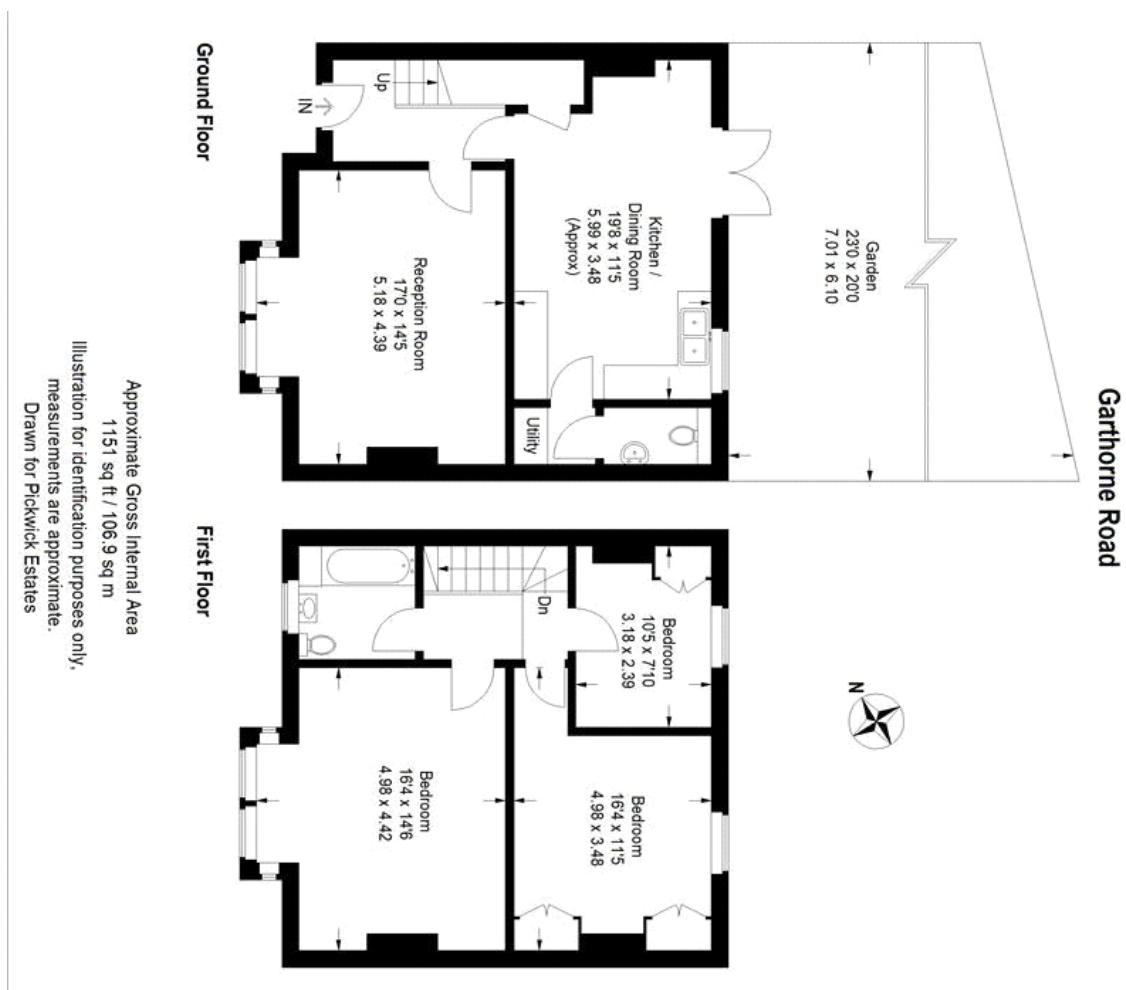
property features

- A unique and well-maintained Victorian 3 bedroom family home
- Located on this popular no through residential road in the heart of Honor Oak Park
- Good size hallway and generous front lounge
- Spacious kitchen dining room
- Utility room with separate guest toilet
- Fully tiled family bathroom

ALPS Estates Ltd trading as Pickwick Estates
47 Honor Oak Park Honor Oak
London, SE23 1EA, United Kingdom
Reg No : 7444750
Registered in England

Telephone : 020 3397 1166
Website : <https://www.pickwickestates.co.uk>





For Full EPC information, click [here](#)