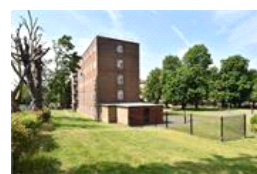
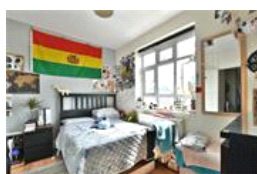
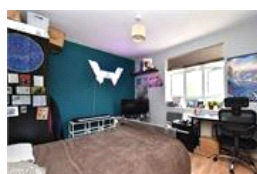
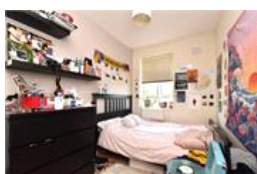
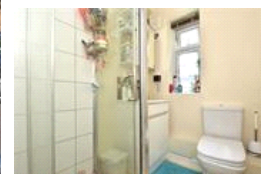
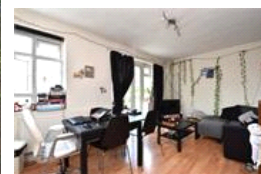
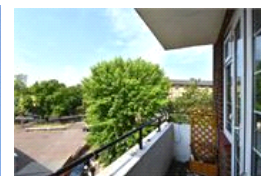


Pikethorne, , SE23 (3 bedroom Flat)

£350,000



## property description

Spacious three-bedroom flat in this well-maintained mid-century block close to Forest Hill Station and local amenities. The flat benefits from 826 sq ft of floor space (76.6 sqm), a SOUTH facing private balcony, double glazing throughout, views and access to communal grounds. The property is in good decorative order throughout. Upon entry the flat boasts a generous hallway with a large storage cupboard. The accommodation is well arranged with bedrooms on one side of the flat and the kitchen and lounge on the other side with the bathroom accessible from all areas. The lounge is the largest room of the flat and is located at the rear of the building. It has been nicely decorated and is ...

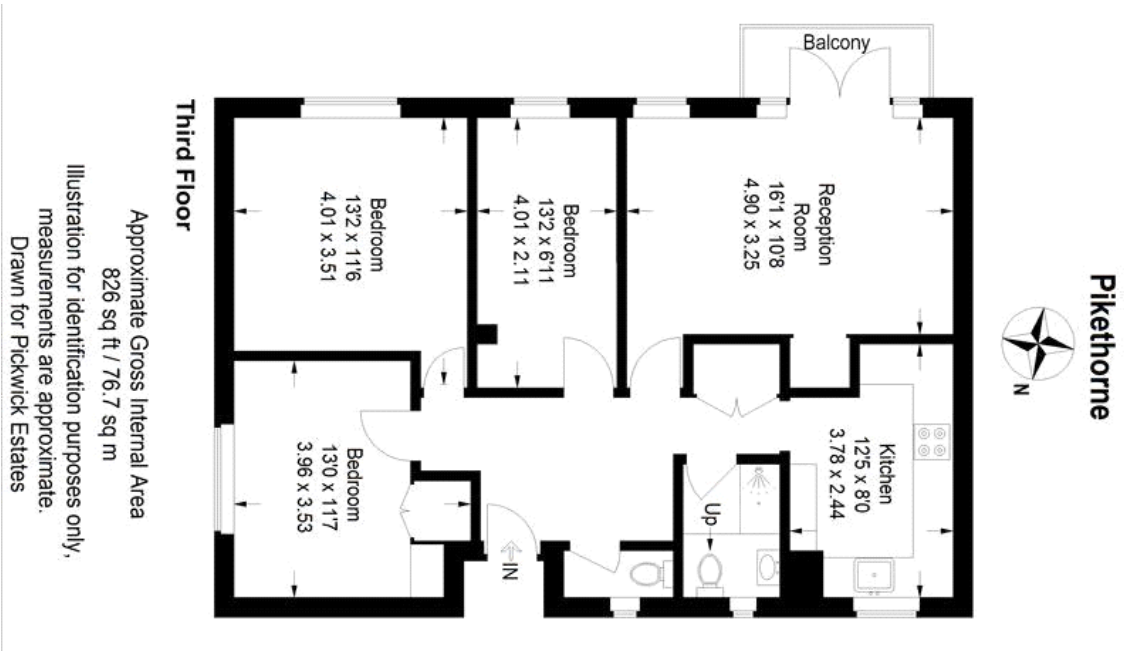
## property features

- Spacious three double bedroom flat
- Private SOUTH facing balcony
- Generous reception room
- Double glazing throughout
- Close to Forest Hill station (London Bridge and Overground connections)
- Close to an array of amenities in Forest Hill

ALPS Estates Ltd trading as Pickwick Estates  
47 Honor Oak Park Honor Oak  
London, SE23 1EA, United Kingdom  
Reg No : 7444750  
Registered in England

Telephone : 020 3397 1166  
Website : <https://www.pickwickestates.co.uk>





For Full EPC information, click [here](#)