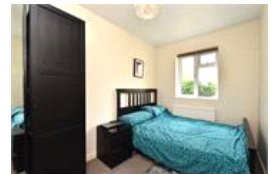
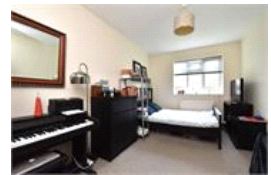
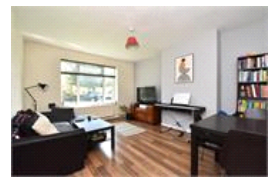


Lilian Rolfe House , SE27 (3 bedroom Flat)

£343,000



property description

A well-proportioned three double bedroom ground floor purpose built flat situated in the Vincennes Estate which is conveniently located between Gypsy Hill and West Norwood. Extensive, sturdy and great value are just a few ways to describe this spacious flat. The accommodation is very impressive with the internal floor space being 865 sq ft which comprises three double bedrooms, a large separate fully fitted kitchen, separate W/C, contemporary bathroom, ample storage throughout. Further benefits include double glazing throughout, gas central heating and being offered to the market with no onward chain.

property features

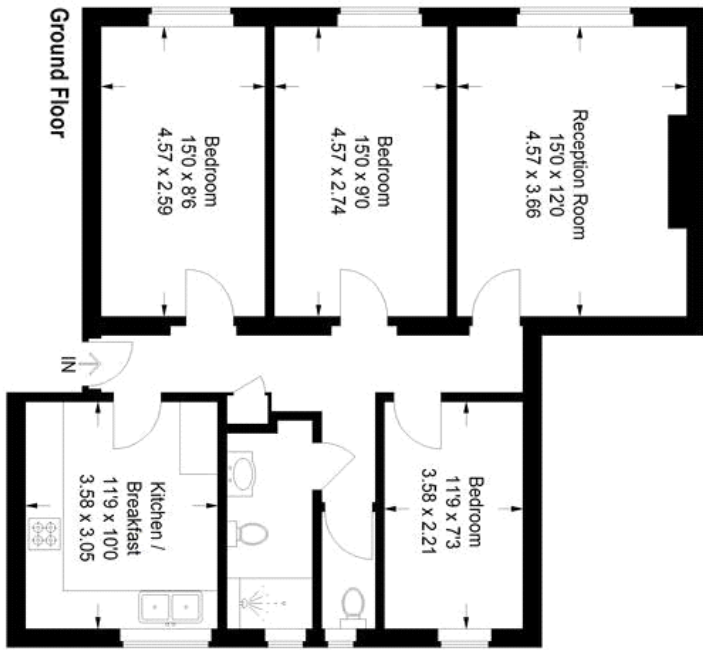
- 3 bedroom ground floor flat
- BRIGHT AND AIRY
- Generous reception room
- Double glazing throughout
- Nicely presented kitchen and bathroom
- Chain free

Lilian Rolfe House , SE27 (3 bedroom Flat)

£343,000



Hamilton Road



Approximate Gross Internal Area
865 sq ft / 80.4 sq m

Illustration for identification purposes only.
measurements are approximate.
Drawn for Pickwick Estates.

For Full EPC information, click [here](#)