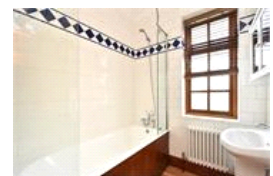
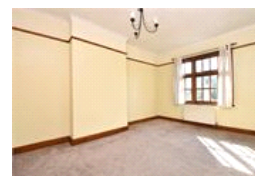
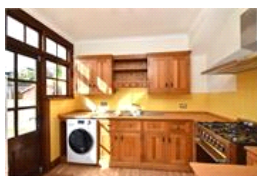
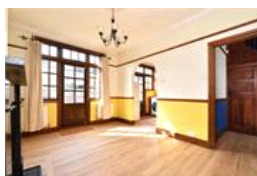
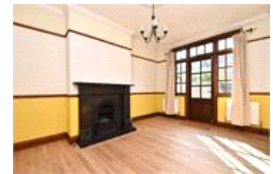
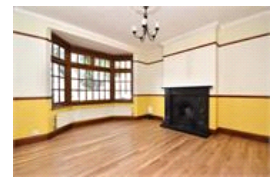
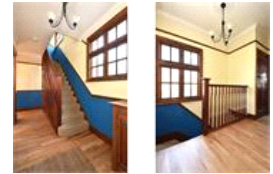


Tatnell Road , SE23 (3 bedroom House)

£2,500/month



property description

NO HMO. NOT SUITABLE FOR SHARERS. Offered to the market is this lovely three bedroom 1930's semi detached family home with a SOUTH FACING private rear garden with a wide side return access. Conveniently located just 2 minutes' walk from Honor Oak Park Station and the amenities of the high street. Upon entry there is an attractive entrance with parquet flooring that spreads seamlessly throughout the house. At the front of the house is a generous reception room with parquet flooring and a characterful marble feature fireplace. To the rear is a dining room which also has a marble fireplace and leads to an Oak fitted kitchen including a free standing Smeg gas oven and hob and white g...

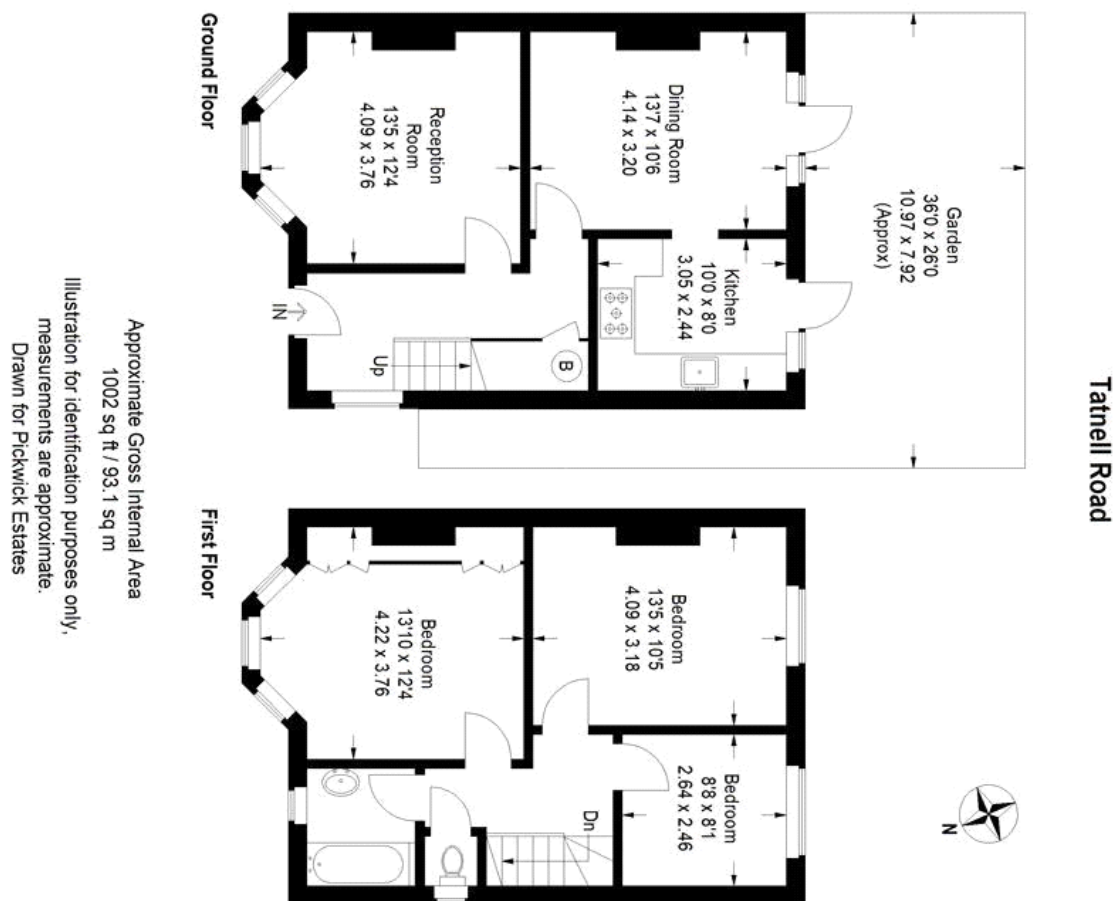
property features

- | | |
|--|--|
| <ul style="list-style-type: none"> • Three bedroom 1930's semi • SOUTH FACING private rear garden • Parquet flooring • Available now | <ul style="list-style-type: none"> • Excellent local schools • Close to Honor Oak Park Station & local amenities • NO HMO. NOT SUITABLE FOR SHARERS |
|--|--|

ALPS Estates Ltd trading as Pickwick Estates
47 Honor Oak Park Honor Oak
London, SE23 1EA, United Kingdom
Reg No : 7444750
Registered in England

Telephone : 020 3397 1166
Website : <https://www.pickwickestates.co.uk>





For Full EPC information, click [here](#)