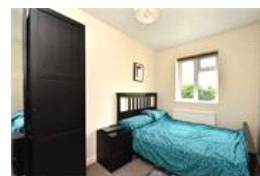
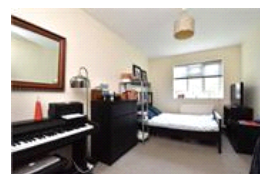
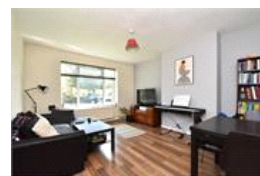


Lilian Rolfe House , SE27 (3 bedroom Flat)

£2,000/month



property description

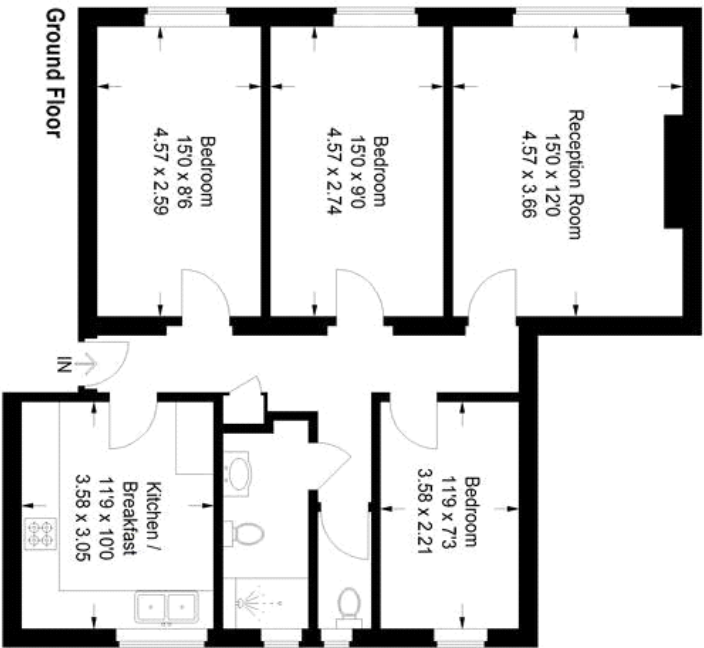
AVAILABLE AGAIN! VIEWINGS SATURDAY 11TH NOVEMBER. A well-proportioned three double bedroom ground floor purpose built flat situated in the Vincennes Estate which is conveniently located between Gypsy Hill and West Norwood. Extensive, sturdy and great value are just a few ways to describe this spacious flat. The accommodation is very impressive with the internal floor space being 865 sq ft which comprises three double bedrooms, a large separate fully fitted kitchen, separate W/C, contemporary bathroom, ample storage throughout. Further benefits include double glazing throughout, gas central heating. Fully furnished. Available now. Great for sharers.

property features

- 3 bedroom ground floor flat
- BRIGHT AND AIRY
- Generous reception room
- Available now. Great for sharers.
- Double glazing throughout
- Nicely presented kitchen and bathroom
- Fully furnished.
- VIEWINGS SATURDAY 11TH NOVEMBER



Hamilton Road



Approximate Gross Internal Area
865 sq ft / 80.4 sq m

Illustration for identification purposes only.
measurements are approximate.
Drawn for Pickwick Estates.

Score	Energy rating	Current	Potential
92+	A		
81-91	B		
69-80	C		74 C
55-68	D	63 D	
39-54	E		
21-38	F		
1-20	G		

For Full EPC information, click [here](#)