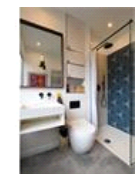
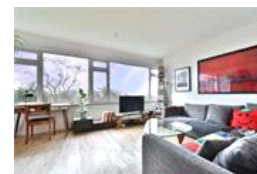
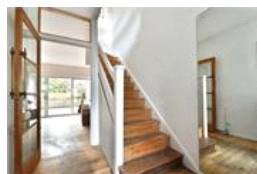
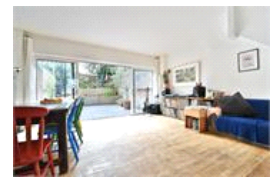


Grassmount , SE23 (4 bedroom House)

£900,000



property description

A charming four-bedroom, mid-century town house, perched at the top of this very popular, quiet residential cul-de-sac in the heart of Forest Hill. The house comes with a beautifully landscaped South facing rear garden, a separate garage and unrestricted on street parking. Also being sold as CHAIN FREE! Grassmount has a thriving community with plenty of well-maintained gardens and green spaces for the resident's families to enjoy, in addition to their own private gardens. The roundabout at the entrance to Grassmount also belongs to the residents and has been a wonderful community space that families can use for birthday parties and the community hosts fireworks nights and easter egg hunts...

property features

- A charming four-bedroom, mid-century town house, with spectacular views over the London Skyline
- Quiet residential cul-de-sac, with a wonderful
- Separate garage and unrestricted on street parking
- Good size kitchen
- Ground floor reception room with views and

ALPS Estates Ltd trading as Pickwick Estates
47 Honor Oak Park Honor Oak
London, SE23 1EA, United Kingdom
Reg No : 7444750
Registered in England

Telephone : 020 3397 1166
Website : <https://www.pickwickestates.co.uk>





Score	Energy rating	Current	Potential
92+	A		
81-91	B		
69-80	C	70 C	82 B
55-68	D		
39-54	E		
21-38	F		
1-20	G		

For Full EPC information, click [here](#)