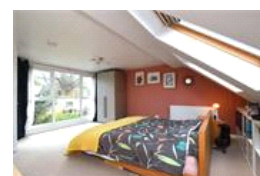
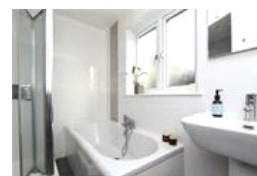
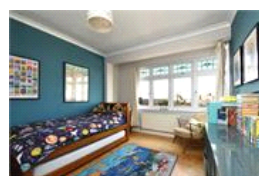
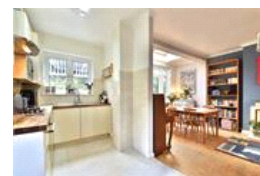
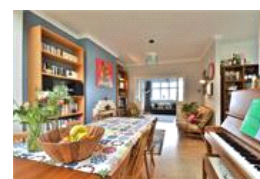
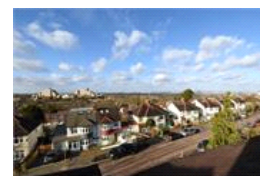


Tewkesbury Avenue, SE23 (4 bedroom House)

£900,000 (OIEO)



property description

Perched on top of Forest Hill offering stunning panoramic views of London is this stunning 4 bedroom, 1930's semi-detached family home. The house has been well maintained by the current owners. This is a larger than average plot, which benefits from off street parking, a separate garage, double glazing throughout and a stylish open plan interior. Due to the generous plot the house has great potential to add a two storey extension to the side of the property (previous planning permission has lapsed). The house is raised from the road offering a high level of privacy. Steps lead up through the front garden to the entrance that is shielded by a porch, perfect for leaving shoes and brollie...

property features

- Lovely 4 bedroom, 1930's semi-detached family home with side return access
- Offering stunning panoramic views of London
- Off street parking and a separate garage (lapsed)
- Double reception room
- Spacious tiered rear front and rear garden
- Kitchen dining room
- Bathroom and separate toilet

ALPS Estates Ltd trading as Pickwick Estates
47 Honor Oak Park Honor Oak
London, SE23 1EA, United Kingdom
Reg No : 7444750
Registered in England

Telephone : 020 3397 1166
Website : <https://www.pickwickestates.co.uk>





For Full EPC information, click [here](#).