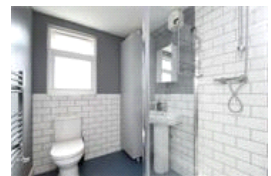
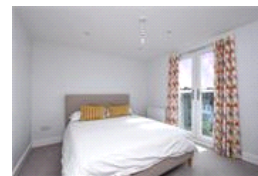
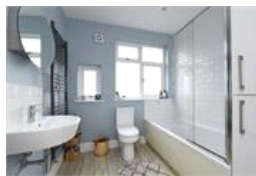
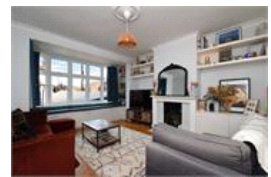


Courtrai Road , SE23 (5 bedroom House)

£950,000



property description

Sat proudly on the sunny SOUTH facing garden side of this popular street is this superb 5-bedroom 1930's end of terrace house that has been opened up at the rear and loft converted to create a very spacious, beautifully decorated family home (1376 sqft, 127.8 sqm). The house is offered to the market CHAIN FREE! Located moments from all the convenient amenities the high street has to offer and Honor Oak Park station with excellent connections to London Bridge and the Overground. The front of the house has an appealing façade with traditional bay windows on the first and second floor that have been double-glazed. A cute walled front garden shields the house from the street and has ...

property features

- Superb 5-bedroom 1930's end of terrace house
- Generous SOUTH facing private rear garden
- CHAIN FREE SALE
- Double glazing throughout
- 1376 sqft, 127.8 sqm of nicely decorated internal space
- Comfortable lounge
- Fabulous kitchen dining room with modern

ALPS Estates Ltd trading as Pickwick Estates
47 Honor Oak Park Honor Oak
London, SE23 1EA, United Kingdom
Reg No : 7444750
Registered in England

Telephone : 020 3397 1166
Website : <https://www.pickwickestates.co.uk>





For Full EPC Information, click [here](#)