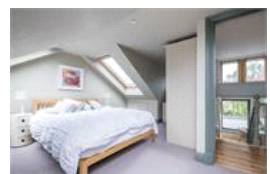
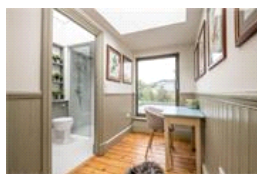
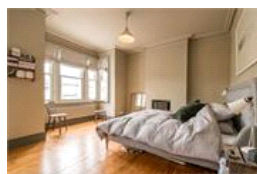
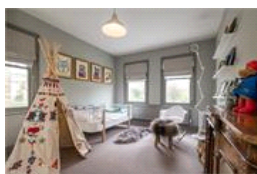
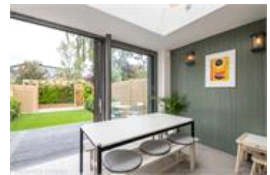
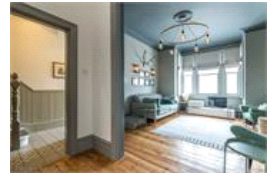
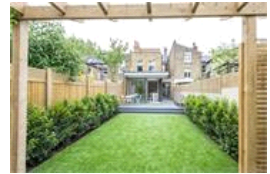


Piermont Road, SE22 (4 bedroom House)

£1,500,000



property description

CHAIN FREE! A truly stunning red brick Victorian, four double bedroom family home, in a lovely quiet Cul de Sac in East Dulwich that leads directly to the green open spaces of Peckham Rye Park. The property has been renovated to an extremely high standard throughout and the decor is both stylish and contemporary, whilst maintaining period character and charm. The house offers almost 2000 sqft of well laid out living accommodation, off street parking and a beautifully landscaped low maintenance rear garden. Upon approach is an impressive façade of exposed red brickwork with detailed masonry around the sash windows and porch. The driveway is bordered by bin sheds and a pathway leading to...

property features

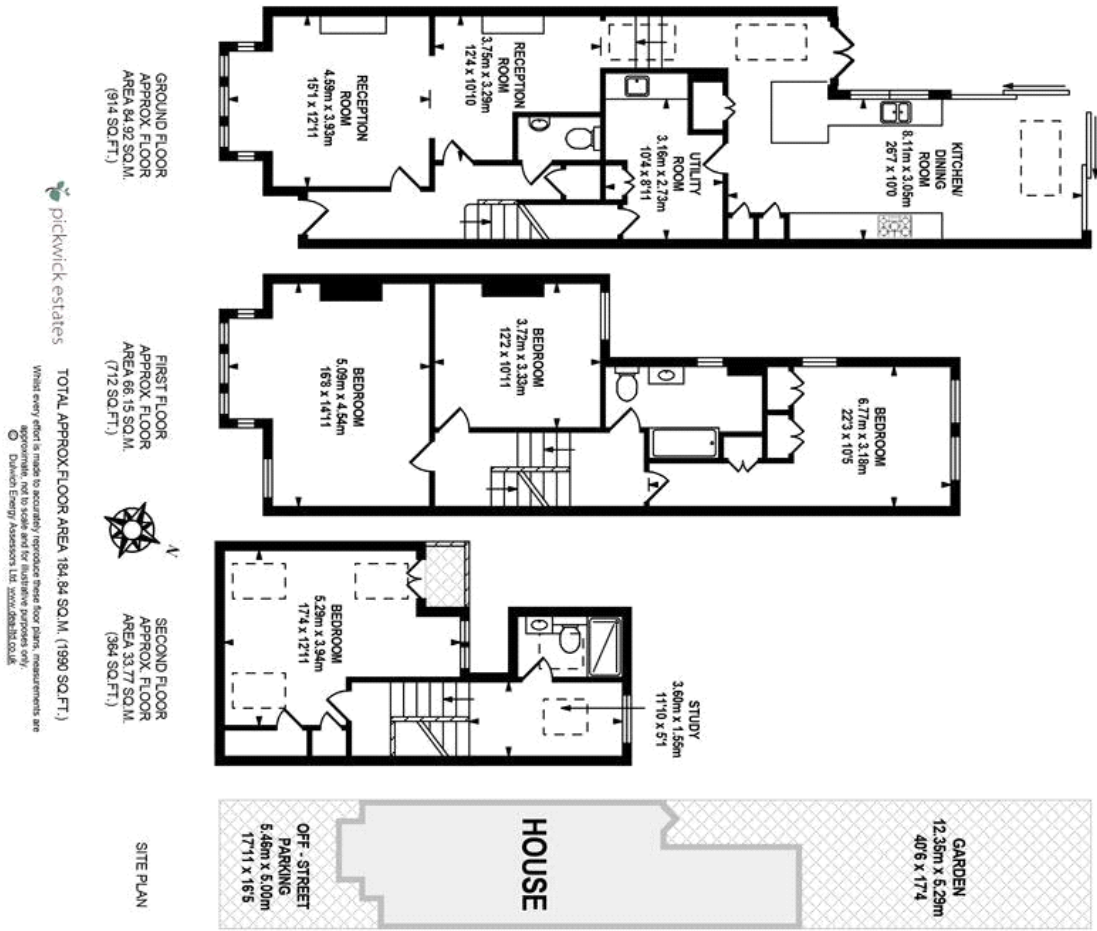
- CHAIN FREE, stunning red brick Victorian, four double bedroom family home
- Lovely Kitchen/Breakfast room with underfloor heating
- Off street parking
- Downstairs cloakroom and coat cupboard
- Large separate utility room
- Quiet tree lined cul de sac leading to P

ALPS Estates Ltd trading as Pickwick Estates
8 Woodwarde Road Dulwich
London, SE22 8UJ, United Kingdom
Reg No : 4270797
Registered in England

Telephone : 020 3397 1144
Website : <https://www.pickwickestates.co.uk>



Piermont Road, SE22 (4 bedroom House) £1,500,000



For Full EPC information, click [here](#)