



## property description

Nestled between Crofton Park and Honor Oak Park is this lovely first floor, one bedroom apartment that benefits from a unique aspect over Kings College Playing fields! Ladywell Heights is a well-maintained block of modern apartments located in very quiet, private cul de sac just off Crofton Park Road. The building has a secure entry phone system and allocated parking. The flat is located at the rear of the building, which is also south facing so it gets an abundance of natural light throughout the year. Upon entering the flat, there is a generous hallway with a large storage cupboard. The main attraction is the lovely front reception room which benefits dual aspect windows both with far reaching green views over the playing fields. The southerly facing aspect has a Juliette balcony which will come into its own in the summer months and the westerly facing window is a large square bay, perfect spot for a desk for those who might work from home. With a view like this who would want to go into the office! The kitchen is semi-open planned to the reception room. it ...

## property features

- Fabulous one bedroom apartment
- Benefitting from stunning unique views over Kings College Playing fields
- First floor of a secure, well maintained modern apartment block
- Dual aspect reception room with juliette balcony and square bay window
- Stylish kitchen with integrated appliances
- Bathroom with shower above bath, toilet and wash hand basin

ALPS Estates Ltd trading as Pickwick Estates  
47 Honor Oak Park Honor Oak  
London, SE23 1EA, United Kingdom  
Reg No : 7444750  
Registered in England

Telephone : 020 3397 1166  
Website : <https://www.pickwickestates.co.uk>



## Ladywell Heights

Approximate Gross Internal Area  
41.4 sq m / 446 sq ft

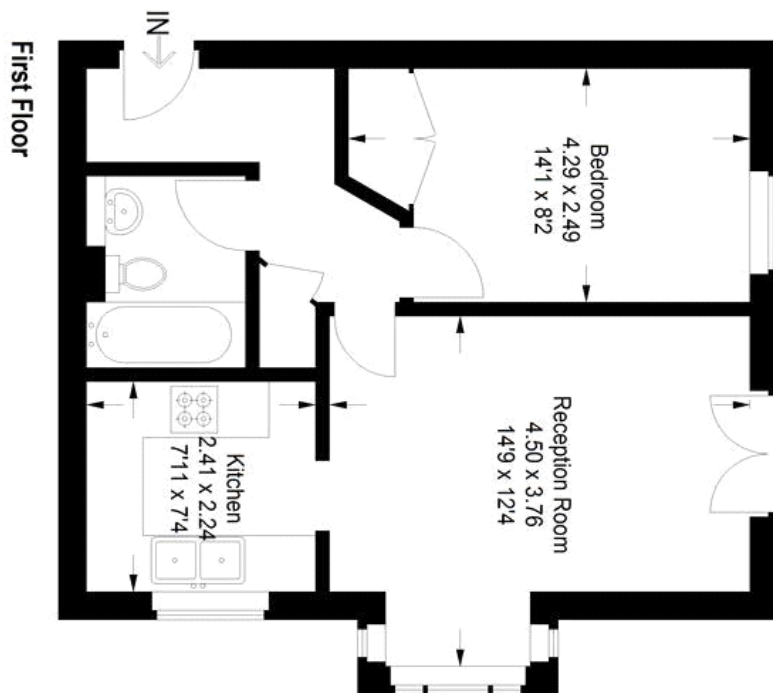


Illustration for identification purposes only,  
measurements are approximate,  
Drawn for Pickwick Estates.

For Full EPC information, click [here](#)