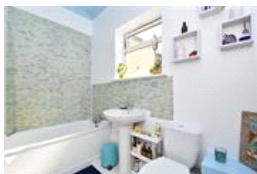
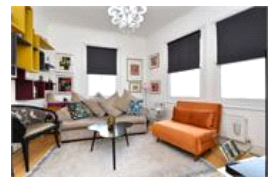
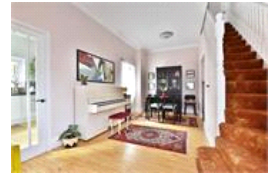


Garthorne Road, SE23 (2 bedroom House)

£750,000 (Guide Price)



**Photo  
coming  
soon**

## property description

A unique and well-maintained, end of terrace, Victorian 2/3-bedroom home, sat proudly on the corner of a popular no through residential road in the heart of Honor Oak Park, less than 400 meters from the amenities of the high street and the station. Thanks to being on a corner plot, the house benefits from a unique layout with both front and rear gardens, gated access to the rear and plenty of windows providing lots of natural light. The house is set back from the street by a neat front garden shielded by a wall with a gate and a pathway leading to the entrance. Upon entry there is a reception/dining room with wooden flooring that spreads seamlessly throughout the ground floor an...

## property features

- A unique and well-maintained Victorian 2/3-bedroom home
- Sat proudly on the corner of a popular no through residential road in the heart of Honor Oak Park
- Kitchen - with potential to extend (STTP)
- 2 reception rooms, Dining/reception room and lounge
- Freehold end of terrace house

ALPS Estates Ltd trading as Pickwick Estates  
47 Honor Oak Park Honor Oak  
London, SE23 1EA, United Kingdom  
Reg No : 7444750  
Registered in England

Telephone : 020 3397 1166  
Website : <https://www.pickwickestates.co.uk>



