

Brockley Park , SE23 (2 bedroom Flat)

£1,850/month

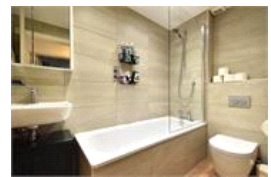


Photo coming soon

Photo coming soon

Photo coming soon

Photo coming soon

Photo coming soon

property description

Situated on the ground floor of a well-maintained modern development, this attractive two-bedroom apartment offers well-balanced accommodation and approximately 660 sq ft (61.3 sqm) of internal space. The property is neutrally decorated throughout and benefits from a separate kitchen, off-street parking, a secure entry phone system, and access to communal gardens. Upon entering, a spacious hallway provides access to all rooms, enhancing the overall sense of space and flow throughout the apartment. The bathroom is centrally positioned within the flat, making it easily accessible from all areas. Finished in a modern style, it features tiled walls, a heated towel rail, and a contemporary white ...

property features

- Two bedroom ground floor flat
- Off street parking
- Communal Gardens
- Available mid July
- Neutrally decorated throughout
- Close to Honor Oak Park station with regular services to London Bridge (around 15mins)
- Rlvthe Hill Fields, One Tree Hill and Horniman

ALPS Estates Ltd trading as Pickwick Estates
 47 Honor Oak Park Honor Oak
 London, SE23 1EA, United Kingdom
 Reg No : 7444750
 Registered in England

Telephone : 020 3397 1166
 Website : <https://www.pickwickestates.co.uk>



Brockley Park

Approximate Gross Internal Area
61.3 sq m / 660 sq ft

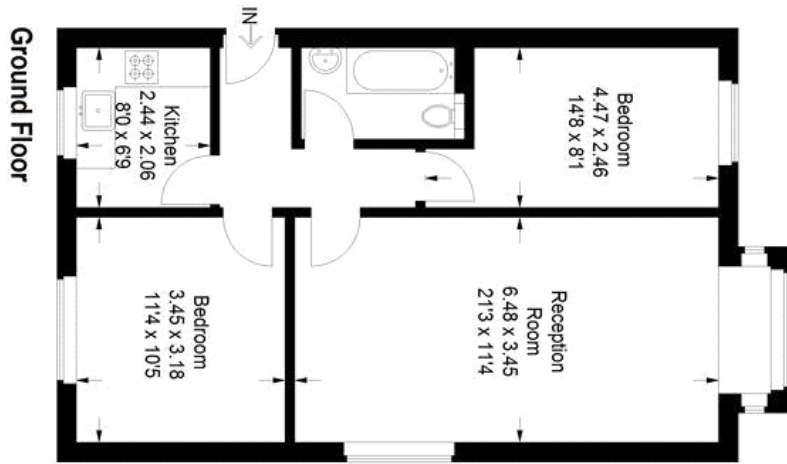


Illustration for identification purposes only.
measurements are approximate.
Drawn for Pickwick Estates.

For Full EPC information, click [here](#)