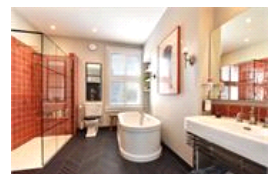
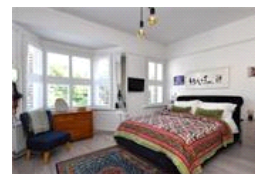
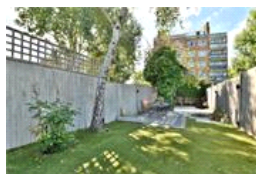
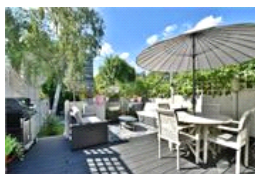
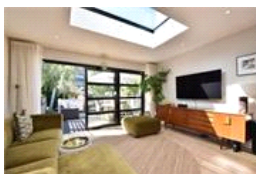


Upland Road , SE22 (4 bedroom House)

£1,650,000



property description

Stunning Four-Bedroom Victorian Home with Contemporary Elegance and Period Charm This exquisite four-bedroom Victorian semi-detached family home blends period charm with contemporary style, offering a high-quality finish throughout. Located on the peaceful, sought-after Upland Road, this beautiful family residence features off-street parking for two cars, side return access, and a beautifully landscaped 68-ft WEST-facing rear garden. Thoughtfully extended and renovated, it boasts 2,019 sqft (187.6 sqm) of living space, including a stunning open-plan kitchen/dining/reception area, spacious bedrooms, elegant bathrooms, and generous living areas—making it the perfect home for modern family li...

property features

- Exquisite four-bedroom Victorian semi-detached family home with period charm
- Spacious 2,019 sqft (187.6 sqm) of living space, including a stunning open-plan
- Elegant double reception room with high ceilings, parquet flooring, sash windows with shutters
- Modern open-plan kitchen featuring a

ALPS Estates Ltd trading as Pickwick Estates
8 Woodwarde Road Dulwich
London, SE22 8UJ, United Kingdom
Reg No : 4270797
Registered in England

Telephone : 020 3397 1144
Website : <https://www.pickwickestates.co.uk>



- Versatile loft conversion with additiona...

ceilings, bespoke wardrobes, bi-fold doors, and an en-suite

- Well-maintained red brick Victorian façade...



020 3397 1144

Upland Road , SE22 (4 bedroom House)

£1,650,000



For Full EPC information, click [here](#)