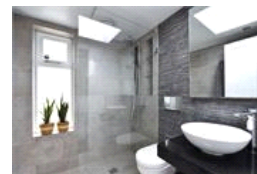
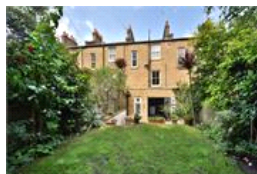
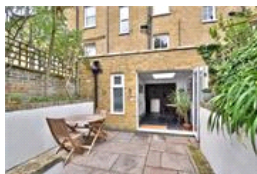
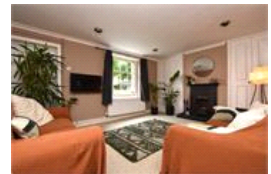


Mercia Grove , SE13 (3 bedroom House)

£750,000



property description

Oozing character and charm, is this beautifully presented, three storey period house, which has a versatile layout and can provide up to four bedrooms. The house also benefits from an attractive, landscaped SOUTH facing, private rear garden. Situated in a very convenient cul-de-sac, just off Lewisham High Street, with Lewisham Station and the DLR just a 7 minute walk away. As a part of a conservation area, Mercia Grove is a particularly pretty residential street and remarkably quiet thanks to being a cul-de-sac. The property has great kerb appeal thanks to its period façade with exposed yellow stock brickwork, original sash windows with detailed masonry and raised ground floor steps. The ...

property features

- Beautifully presented, three storey period house
- Versatile layout and can provide up to four bedrooms
- Attractive, landscaped SOUTH facing, private rear garden
- very convenient cul-de-sac, just off Lewisham High Street, close to Lewisham Station and the DLR
- 2 reception rooms

ALPS Estates Ltd trading as Pickwick Estates
47 Honor Oak Park Honor Oak
London, SE23 1EA, United Kingdom
Reg No : 7444750
Registered in England

Telephone : 020 3397 1166
Website : <https://www.pickwickestates.co.uk>





For Full EPC information, click [here](#)