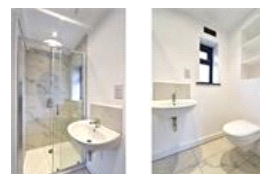
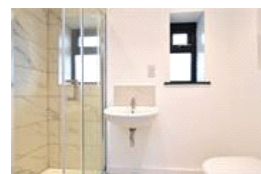
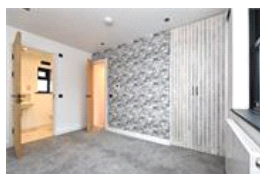
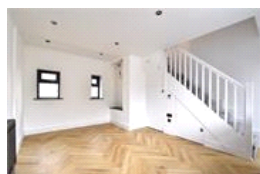
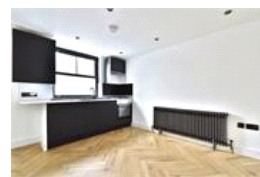
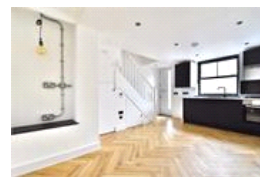
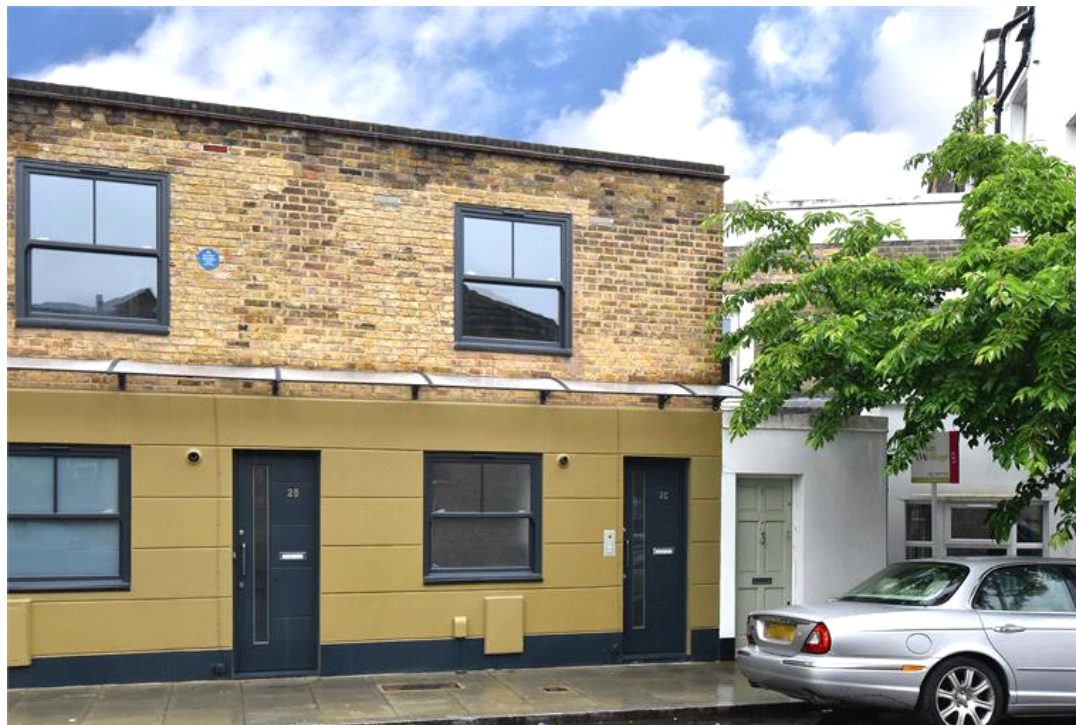


Jarvis Road , SE22 (1 bedroom Flat)

£325,000 (OIEO)



property description

A unique opportunity to purchase this historic, beautifully presented, 1-bedroom SHARE OF FREEHOLD mews house! An alternative to those looking for a one bedroom flat. Located in the heart of East Dulwich, just off Melbourne Grove, within catchment for Charter school, only about 200m from East Dulwich station and the abundance of amenities of Lordship Lane. The house is a Victorian terrace of three houses, on this quiet residential cul-de-sac, just off Melbourne Grove. The house has an attractive façade with exposed bricks at first floor level and rendered walls at ground level. The property has its own entrance from the street and offers double glazing throughout. Upon entry is a stu...

property features

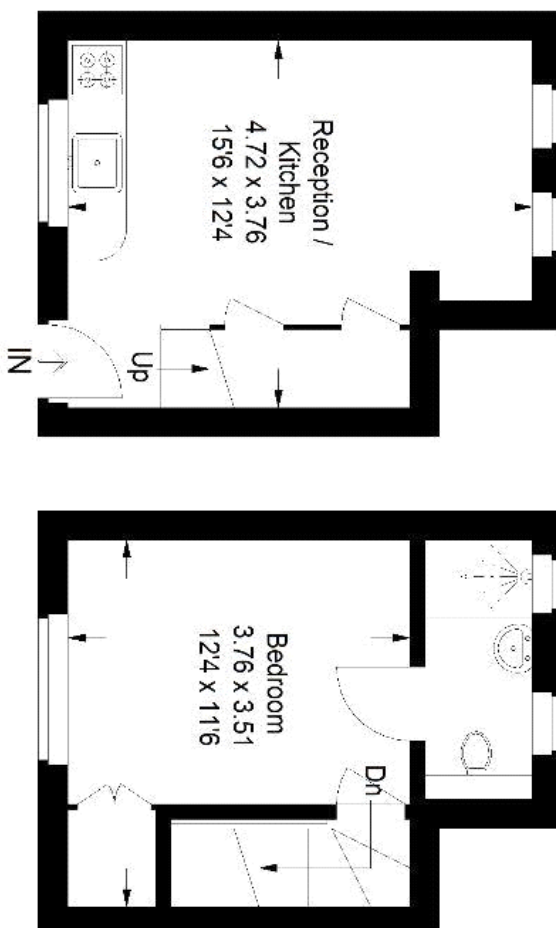
- A beautifully presented, utterly unique, 1-bedroom FREEHOLD mews house
- Located in the heart of East Dulwich in a quiet residential cul-de-sac just off Melbourne Grove
- Double glazing throughout
- High quality finish
- Open plan kitchen living room
- Sn-suite shower room

ALPS Estates Ltd trading as Pickwick Estates
8 Woodwarde Road Dulwich
London, SE22 8UJ, United Kingdom
Reg No : 4270797
Registered in England

Telephone : 020 3397 1144
Website : <https://www.pickwickestates.co.uk>



Jarvis Road



Ground Floor

First Floor

Illustration for identification purposes only,
measurements are approximate.
Drawn for Pickwick Estates