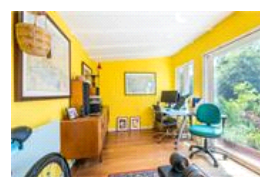
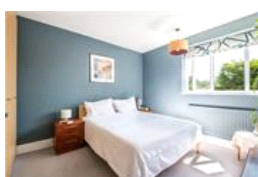
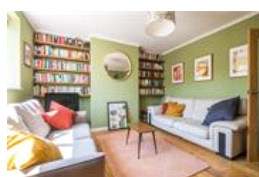
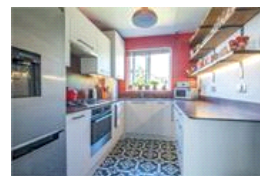
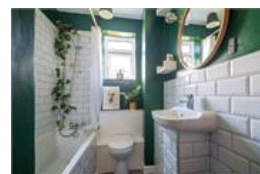
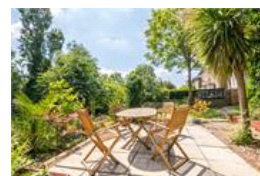


Devonshire Road , SE23 (2 bedroom Flat)

£425,000



property description

Calling all first-time buyers! Decorated in a sophisticated style is this lovely two double bedroom flat on the first floor of this well-maintained mid-century block located on Devonshire Road. The flat offers well-proportioned accommodation with a generous 759 sqft (70.5 sqm) of floor space. The property benefits from low service charges, nice views, lots of storage, double glazing throughout and a designated share of communal gardens that has been nicely landscaped and includes a home office/gym/studio hard wired with electricity and heating! This flat is turnkey ready and in a great location making it ideal for first time buyers. Devonshire Road is a much-loved street, stretching...

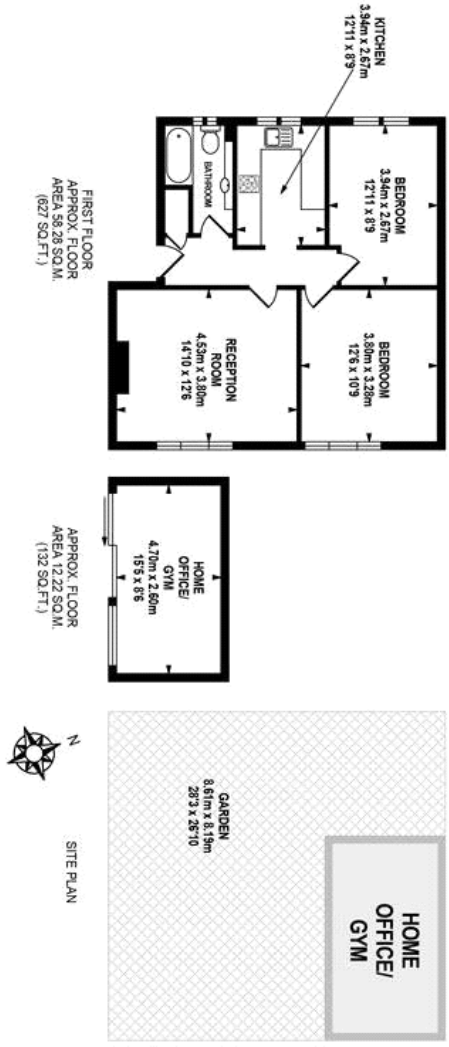
property features

- Lovely two double bedroom flat on the first floor of this well-maintained mid-century block
- Well-proportioned accommodation with a generous 759 sqft (70.5 sqm) of floor space
- Stylish kitchen with integrated appliances and space for a tall fridge freezer
- Nicely decorated bathroom
- Good size reception room with engineered Oak

ALPS Estates Ltd trading as Pickwick Estates
47 Honor Oak Park Honor Oak
London, SE23 1EA, United Kingdom
Reg No : 7444750
Registered in England

Telephone : 020 3397 1166
Website : <https://www.pickwickestates.co.uk>





 pickwick estates

TOTAL APPROX FLOOR AREA 70.50 SQ.M (759 SQ.FT.)

Whilst every effort is made to accurately reproduce these floor plans, measurements are approximate, and it is advised that you measure the property yourself. Detailed floor plans are available on request. Call us on 0203 3397 1166 or visit our website www.pickwickestates.com

SITE PLAN

| Score | Energy rating | Current | Potential |
|-------|---------------|---------|-----------|
| 92+ | A | | |
| 81-91 | B | | 81 B |
| 69-80 | C | 72 C | |
| 55-68 | D | | |
| 39-54 | E | | |
| 21-38 | F | | |
| 1-20 | G | | |

For Full EPC information, click [here](#)