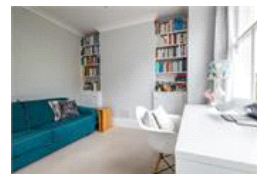
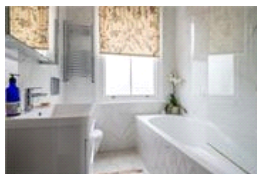
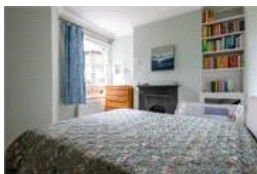
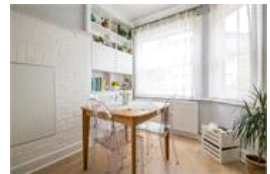
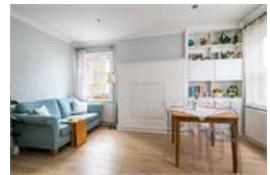


Carson Road , SE21 (2 bedroom Flat)

£450,000



## property description

GUIDE PRICE £450k - £475k. A beautifully presented 2 double bedroom maisonette set on the first floor of this charming end of terrace Victorian period property, located on this pretty tree-lined street in the heart of West Dulwich. The property benefits from its own entrance, completely refurbished to a high standard in 2020, painted throughout in Farrow and Ball paint, a long lease of approximately 125 years remaining, ad hoc service charges, newly double glazed, wooden framed sash windows throughout installed at the start of this year! The house has great kerb appeal, set back from the street with a paved pathway leading to the front door. Upon entry there is an entrance hall wi...

## property features

- A beautifully presented 2 double bedroom maisonette
- Set on the first floor of this charming end of terrace Victorian period property
- Own entrance and long lease Approx (125 years remaining)
- Refurbished to a high standard in 2020, painted throughout in Farrow and Ball paint

ALPS Estates Ltd trading as Pickwick Estates  
47 Honor Oak Park Honor Oak  
London, SE23 1EA, United Kingdom  
Reg No : 7444750  
Registered in England

Telephone : 020 3397 1166  
Website : <https://www.pickwickestates.co.uk>



- Luxurious bathroom newly installed in 20...

Carson Road , SE21 (2 bedroom Flat) £450,000

 pickwick estates

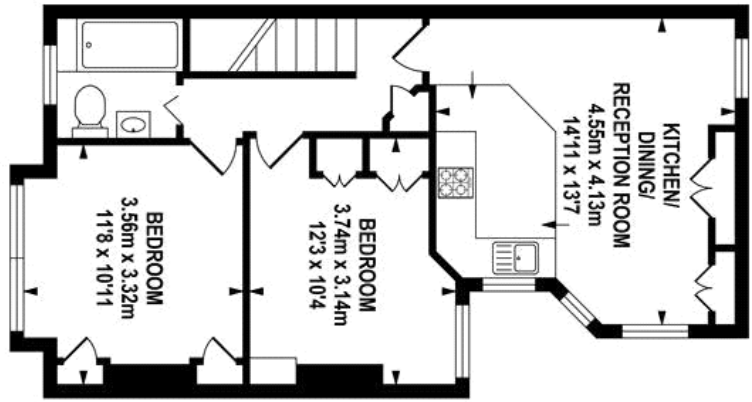
**GROUND FLOOR**  
APPROX. FLOOR  
AREA 3.60 SQ.M.  
(38 SQ.FT.)



**FIRST FLOOR**  
APPROX. FLOOR  
AREA 52.23 SQ.M.  
(562 SQ.FT.)

**TOTAL APPROX. FLOOR AREA 55.83 SQ.M. (600 SQ.FT.)**

Whilst every effort is made to accurately reproduce these floor plans, measurements are approximate, not to scale and for illustrative purposes only.  
Dulwich Energy Assessors Ltd with @ London Living www.london-living.com



For Full EPC information, click [here](#)