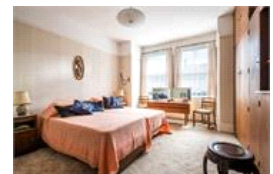
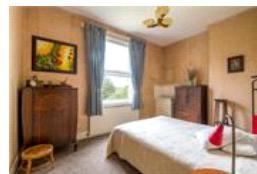
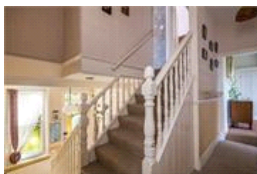
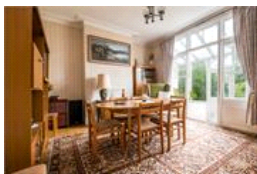
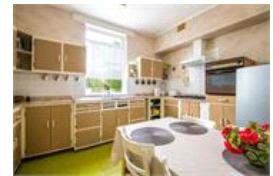
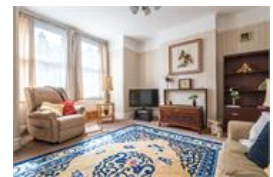


Canonbie Road, SE23 (4 bedroom House)

£1,200,000 (OIEO)



property description

Perched on the popular Canonbie Road, offering stunning views over the London Skyline, is this large semi-detached, Victorian 4 bedroom family home. Benefitting from a large 100 ft WEST facing private rear garden, housing a garage at the end that has rear access from the road behind. Offered to the market CHAIN FREE! The house is perfectly habitable but is in need of modernisation, offering great potential for anyone looking for a project to put their own stamp on a property. This handsome house is set back from the street by a neatly hedged front garden and there is side return access to the right hand side leading to the rear garden. The house offers an impressive red brick façade ...

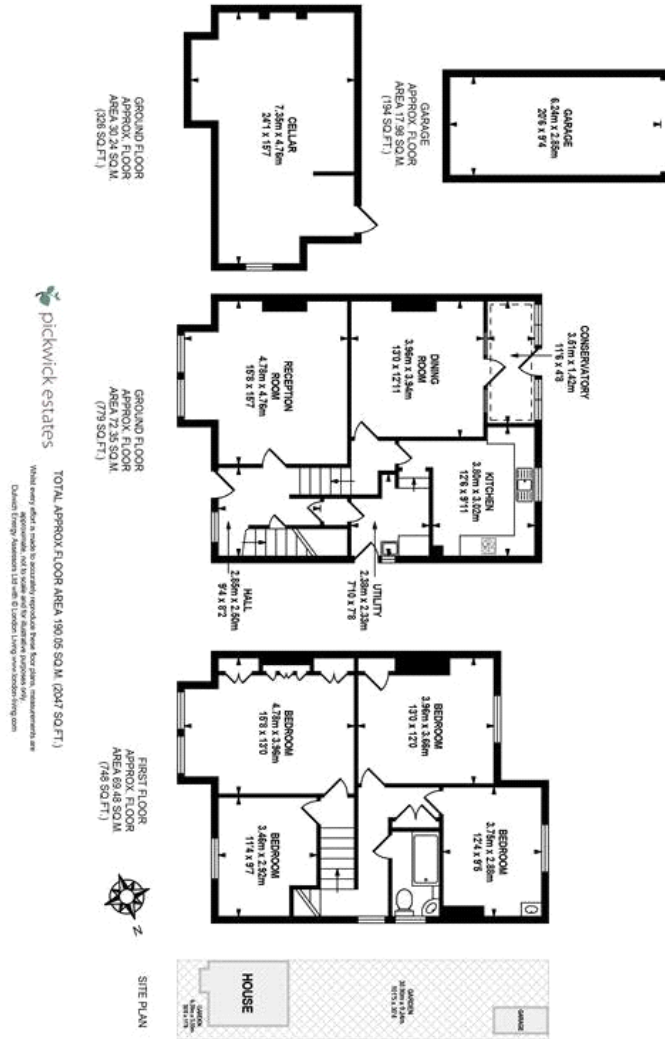
property features

- Substantial, red brick, semi-detached, Victorian 4 bedroom family home
- WEST facing 100 ft private rear garden and side return access
- Two reception rooms
- Kitchen breakfast room
- Utility room and a large cellar
- Huge potential. Loft can be converted (S)

ALPS Estates Ltd trading as Pickwick Estates
47 Honor Oak Park Honor Oak
London, SE23 1EA, United Kingdom
Reg No : 7444750
Registered in England

Telephone : 020 3397 1166
Website : <https://www.pickwickestates.co.uk>





For Full EPC information, click [here](#)