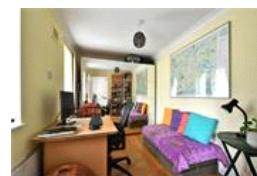
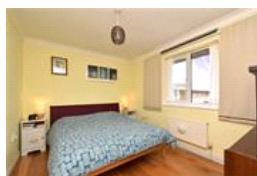
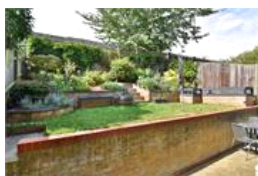
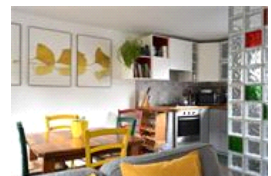
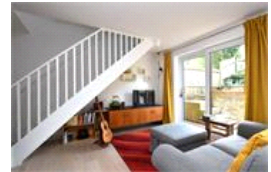
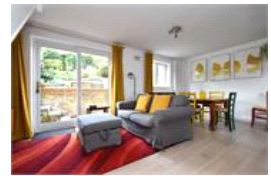


Foxwell Mews, SE4 (2 bedroom House)

£2,200/month



**Photo
coming
soon**

property description

Welcome to Foxwell Mews, a charming residential haven in the heart of London. This exquisite two-bedroom house offers a perfect blend of comfort, convenience, and contemporary living. Nestled in the sought-after SE4 2EP postcode, this property presents a unique opportunity for those seeking a refined urban lifestyle. Boasting a tastefully designed interior, the apartment features a spacious layout, including a modern fitted kitchen and double glazing for added comfort. The property also includes a delightful garden, providing a serene retreat for relaxation or al fresco dining. With off street allocated parking, you'll enjoy the ease of coming home to your own private space. Convenience...

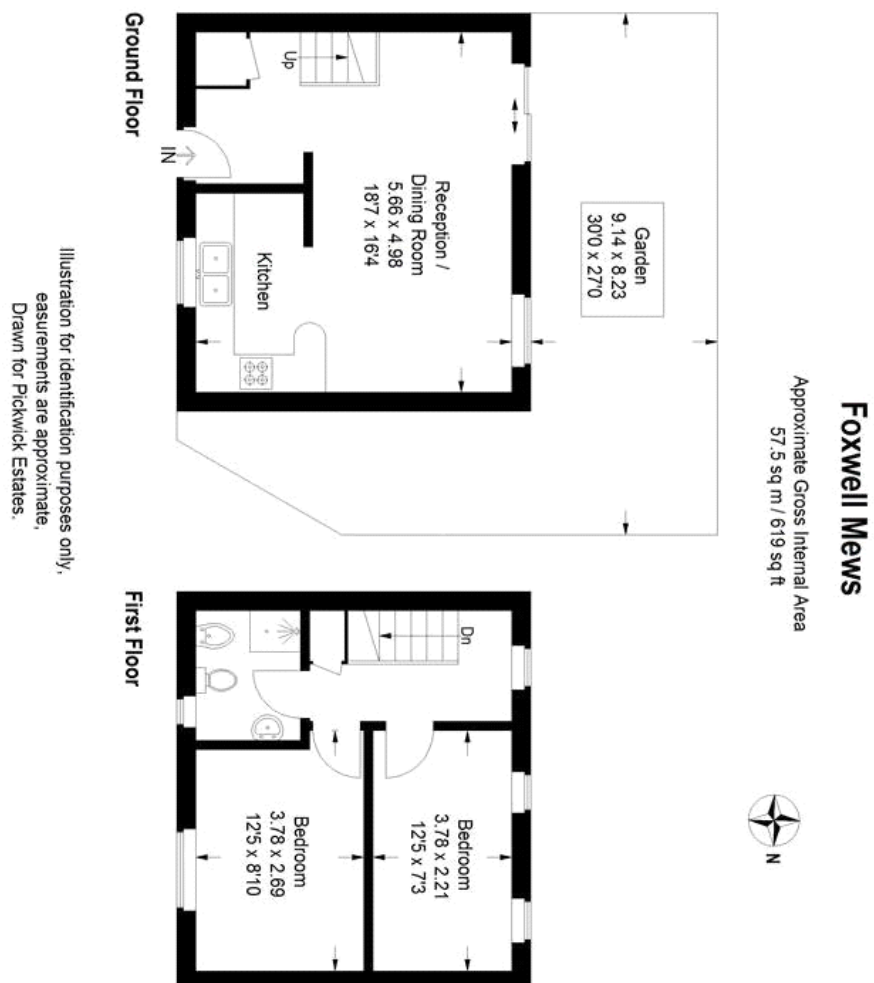
property features

- 2 bedroom house
- Neutrally decorated
- Fitted Kitchen
- Nearby parks, libraries, and leisure centres
- Private garden
- Off street allocated parking
- Within walking distance to Brockley railway station

ALPS Estates Ltd trading as Pickwick Estates
47 Honor Oak Park Honor Oak
London, SE23 1EA, United Kingdom
Reg No : 7444750
Registered in England

Telephone : 020 3397 1166
Website : <https://www.pickwickestates.co.uk>





Score	Energy rating	Current	Potential
92+	A		
81-91	B		
69-80	C	74 C	90 B
55-68	D		
39-54	E		
21-38	F		
1-20	G		

For Full EPC Information, click [here](#)

