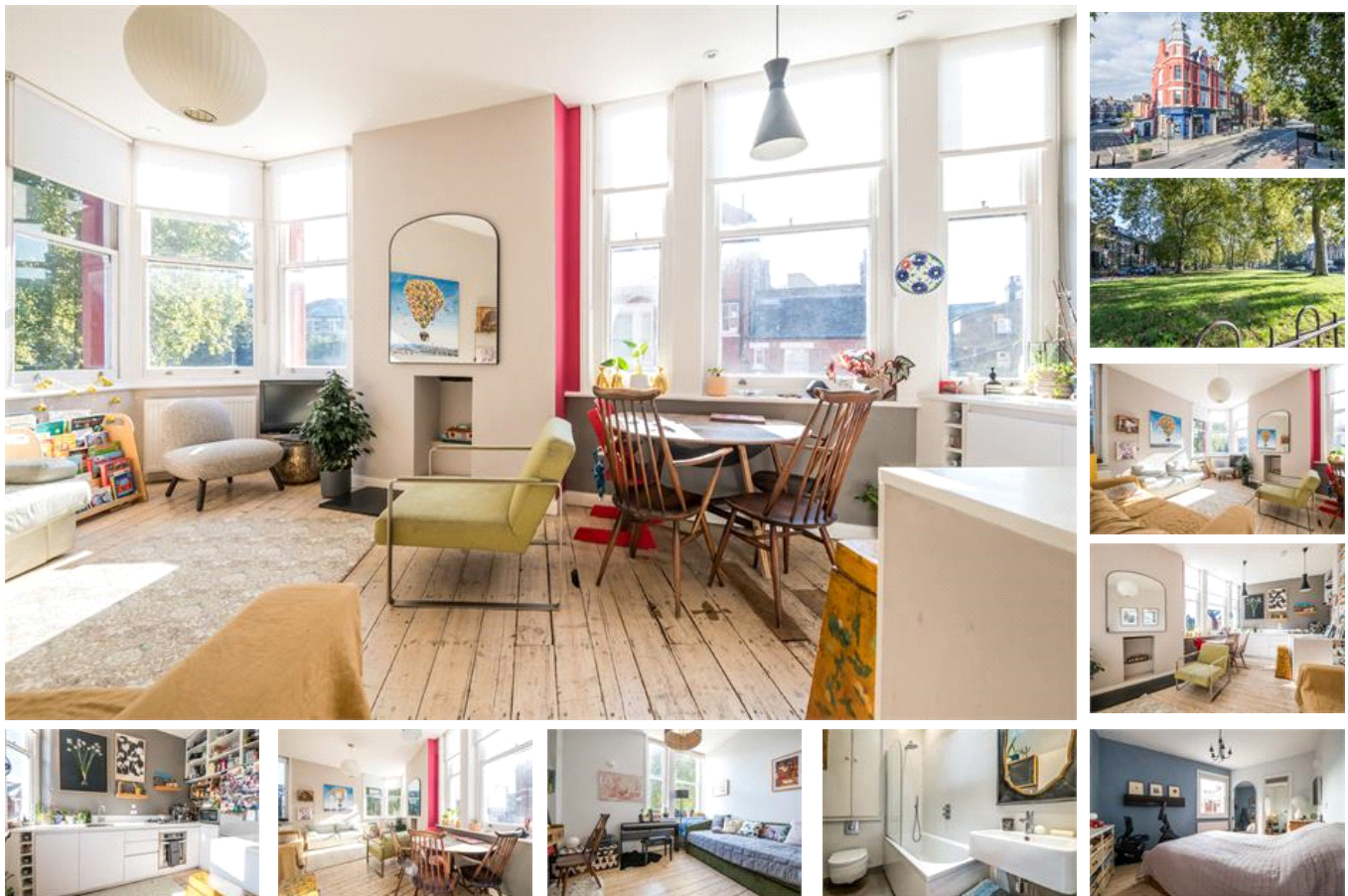


Grove Vale, SE22 (3 bedroom Flat)

£575,000



property description

Occupying an enviable location on the junction of Grove Vale and Lordship Lane, with its array of independent shops, bars, restaurants and pubs is this superb 3-bedroom, 2-bathroom period conversion. Located the first floor of this majestic red brick period building with green leafy views over Goose Green. The flat offers generous proportions of 872 sqft (80.97sqm) of internal floor space, plenty of storage and thanks to being situated on a corner plot there is an abundance of natural light throughout the property. Upon entry there is an entrance hall that offers access to all rooms and has a large storage cupboard. At the front corner of the building is a bright and spacious, ...

property features

- Bright and spacious 3 bedroom first floor flat
- Offering 872 sqft (80.97sqm) of internal floor space
- 2 bathrooms (one en-suite)
- Lovely views over Goose Green and Lordship Lane
- Lovely openplan kitchen reception room with high ceilings and triple aspect windows

ALPS Estates Ltd trading as Pickwick Estates
47 Honor Oak Park Honor Oak
London, SE23 1EA, United Kingdom
Reg No : 7444750
Registered in England

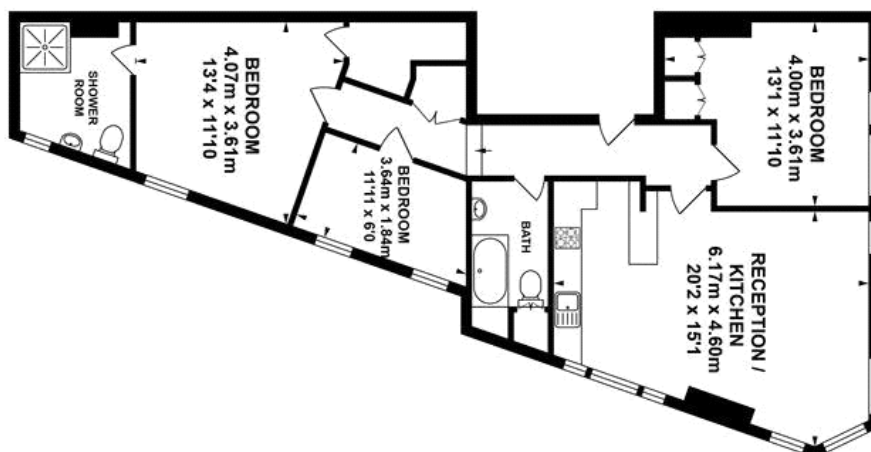
Telephone : 020 3397 1166
Website : <https://www.pickwickestates.co.uk>





FIRST FLOOR
APPROX. FLOOR
AREA 80.97 SQ.M.
(872 SQ.FT.)

Whilst every effort is made to accurately reproduce these floor plans, measurements are approximate, not to scale and for illustrative purposes only.
Dulwich Energy Assessment Ltd info@londonlivingenergyassessing.com



For Full EPC information, click [here](#)