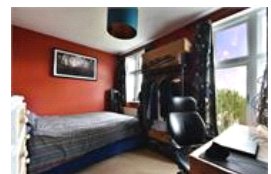
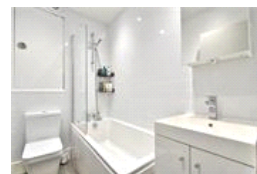
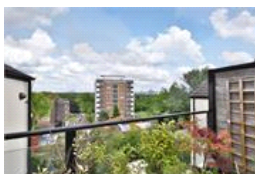
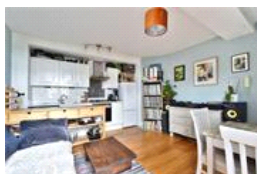
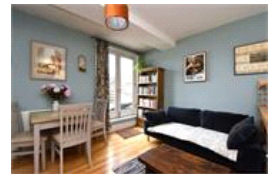
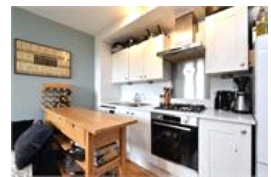
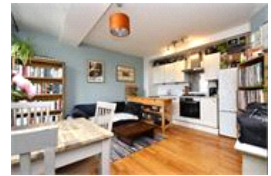


Canonbie Road , SE23 (2 bedroom Flat)

£1,900/month



## property description

AVAILABLE AUGUST. SHORT LET - Beautifully presented two bedroom second floor flat with a large West facing private roof terrace offering spectacular views of the London Skyline! The property is located on Canonbie Road which is one of Forest Hill's premiere residential streets, offering a selection of excellent schools, good transportation links such as Honor Oak Park station (Overground and NR to London Bridge) and green open spaces such as Brenchley Gardens, Peckham Rye and Horniman Gardens with its famous museum. The flat is situated within a well-maintained building and offers well-proportioned accommodation, benefiting from double glazing throughout. Entrance to the flat can be ...

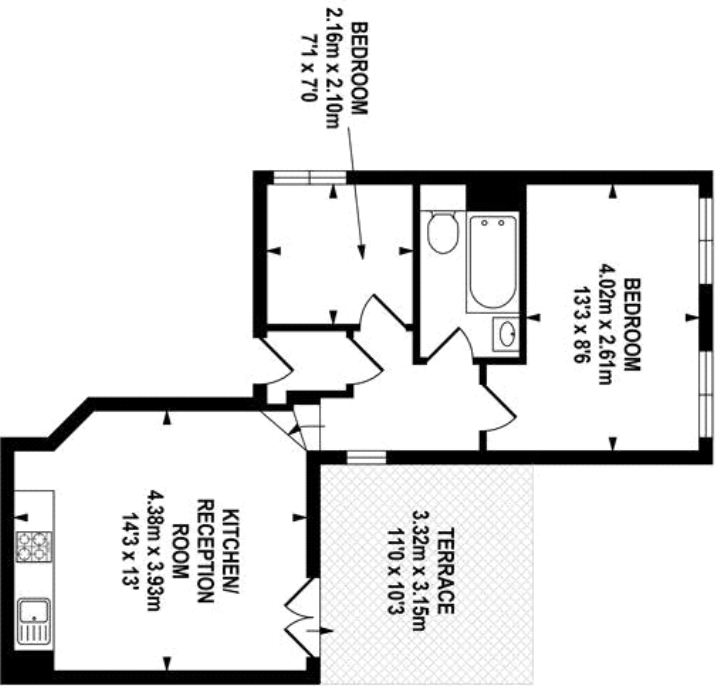
## property features

- Lovely 2 bedroom second floor flat offered to the market CHAIN FREE
- Amazing WEST facing roof terrace with spectacular view of the London skyline
- Nice communal parts
- Well maintained building
- Open planned kitchen reception room
- Fully tiled bathroom with shower above toilet

ALPS Estates Ltd trading as Pickwick Estates  
47 Honor Oak Park Honor Oak  
London, SE23 1EA, United Kingdom  
Reg No : 7444750  
Registered in England

Telephone : 020 3397 1166  
Website : <https://www.pickwickestates.co.uk>





SECOND FLOOR  
APPROX. FLOOR  
AREA 42.26 SQ.M.  
(455 SQ.FT.)



TOTAL APPROX.FLOOR AREA 42.26 SQ.M. (455 SQ.FT.)

Whilst every effort is made to accurately reproduce these floor plans, measurements are approximate, not to scale and for illustrative purposes only.  
© Dulwich Energy Assessors Ltd. www.dea-hd.co.uk

See how to improve this property's energy efficiency.

| Score | Energy rating | Current | Potential |
|-------|---------------|---------|-----------|
| 92+   | A             |         |           |
| 81-91 | B             |         |           |
| 69-80 | C             |         |           |
| 55-68 | D             | 61 D    | 71 C      |
| 39-54 | E             |         |           |
| 21-38 | F             |         |           |
| 1-20  | G             |         |           |

For Full EPC information, click [here](#)