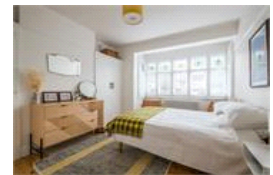
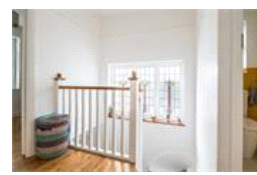
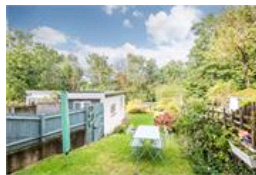
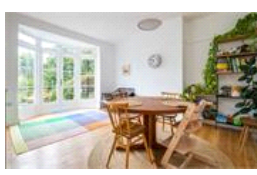
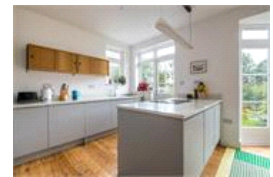
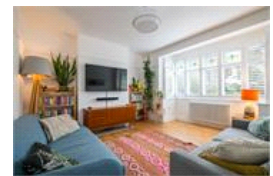


Westwood Park, SE23 (3 bedroom House)

£1,100,000 (OIEO)



property description

Located on this popular residential, tree-lined street, is this superb 1930's semi-detached 3 double bedroom family home that has been completely renovated and beautifully presented throughout. The house benefits from undergoing a 'back to brick' renovation, meaning it's been completely re-wired, re-plumbed with a new central heating system, insulated throughout and even has planning permission for a loft conversion, including wiring and piping ready for an easy install! Not to mention the fabulous views of the city the loft conversion will uncover! The house also comes with a nicely landscaped 65ft WEST facing rear garden which has unique green leafy views over Horniman Nature trail...

property features

- Superb 1930's semi-detached 3 double bedroom family home on a popular quiet residential street
- 65ft WEST facing rear garden with leafy green views and direct access to Horniman nature trail
- Planning permission granted for a loft extension to add two bedrooms and a shower room
- Converted garage to create a garden

ALPS Estates Ltd trading as Pickwick Estates
47 Honor Oak Park Honor Oak
London, SE23 1EA, United Kingdom
Reg No : 7444750
Registered in England

Telephone : 020 3397 1166
Website : <https://www.pickwickestates.co.uk>



