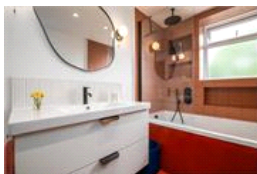
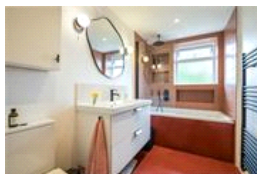
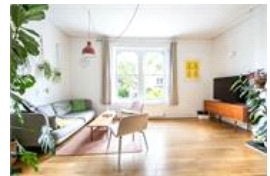
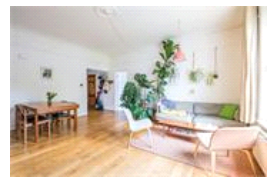


Marmora Road, SE22 (2 bedroom Flat)

£600,000



property description

Offering vast proportions is this magnificent two double bedroom period conversion apartment of 813 square feet (75.56 sqm), on the first floor of a huge double-fronted Victorian semi-detached house. The flat also benefits from a share of a large communal garden (accessed from the side of the house). Parking is unrestricted on the street. Marmora Road is a beautiful road to call home - wide, leafy and quiet, with attractive Victorian mansions on both sides, Peckham Rye Park and Common's 113 acres just a few minutes from your door. Honor Oak Park Station is your closest station; walk 10 to 15 minutes. During their occupancy, the sellers have replaced the windows with double-glazed sashes...

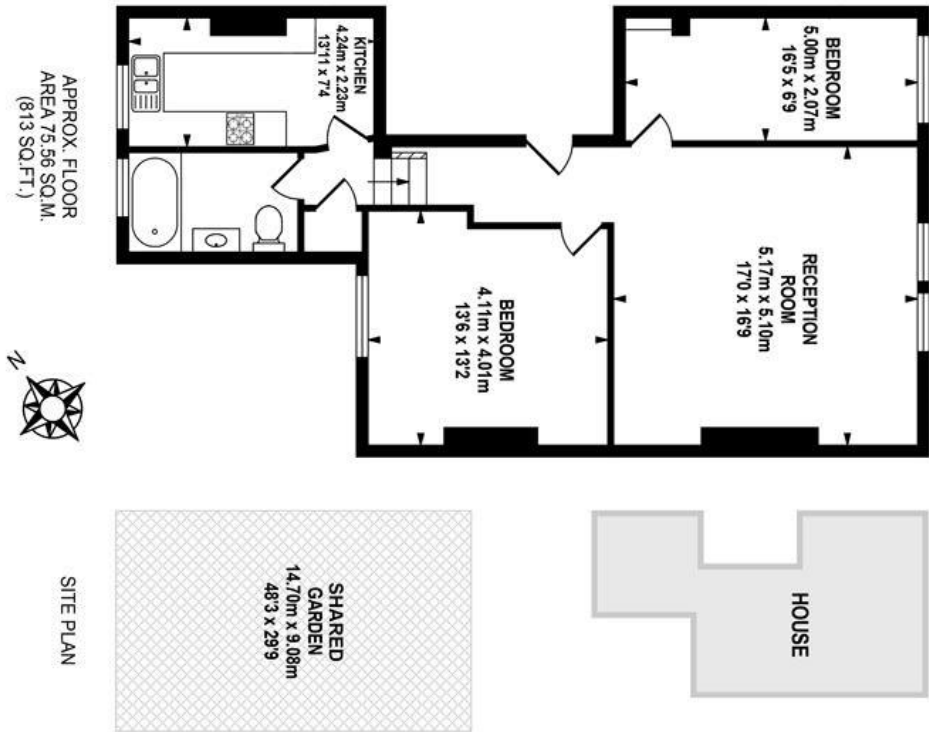
property features

- Magnificent two double bedroom period conversion apartment
- Offering vast proportions 813 square feet (75.56 sqm)
- Share of a large communal garden
- Huge high-ceilinged reception of 17 feet by 17 feet (5m x 5m)
- Modern fitted kitchen

ALPS Estates Ltd trading as Pickwick Estates
47 Honor Oak Park Honor Oak
London, SE23 1EA, United Kingdom
Reg No : 7444750
Registered in England

Telephone : 020 3397 1166
Website : <https://www.pickwickestates.co.uk>





APPROX. FLOOR
AREA 75.56 SQ.M.
(813 SQ.FT.)

TOTAL APPROX.FLOOR AREA 75.56 SQ.M. (813 SQ.FT.)

Whilst every effort is made to accurately reproduce these floor plans, measurements are approximate, not to scale and for illustrative purposes only.
Dulwich Energy Assessors Ltd with © London Living www.london-living.com

For Full EPC information, click [here](#)