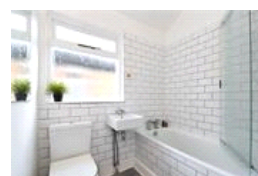
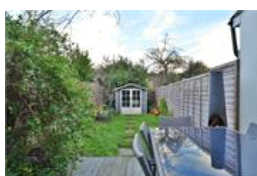
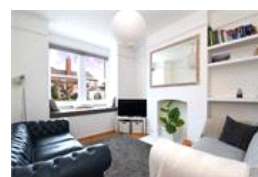
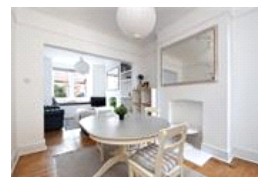


Brockley Rise, SE23 (3 bedroom House)

£775,000



property description

Offering an abundance of character and charm is this lovely, mid terrace, 3-bedroom Victorian family home with a Westerly facing private rear garden. The house is in a prime location with plenty of amenities on its doorstep, including Stillness Primary School on the opposite side of the street and a choice of Stations between Honor Oak Park and Crofton Park. The house has great curb appeal as it is offset from the street by a neat front garden with a hedge and pathway leading to the front door. The house boasts a typical handsome Victorian façade with exposed bricks and a square bay sash window on the ground floor with period detailing above the front door and sash windows. T...

property features

- Nicely presented 3 bedroom Victorian family home
- Double reception room with exposed wood flooring
- Westerly facing rear garden and front garden
- Plenty of character and period features
- Stylish kitchen
- Downstairs toilet
- Nicely decorated family bathroom
- Opposite Stillness Primary School

ALPS Estates Ltd trading as Pickwick Estates
47 Honor Oak Park Honor Oak
London, SE23 1EA, United Kingdom
Reg No : 7444750
Registered in England

Telephone : 020 3397 1166
Website : <https://www.pickwickestates.co.uk>





For Full EPC information, click [here](#)