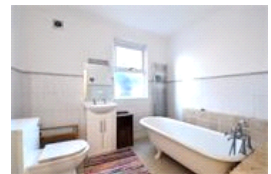
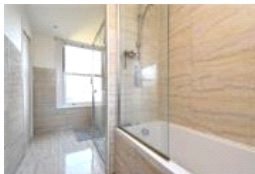
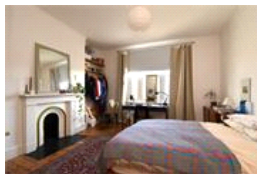
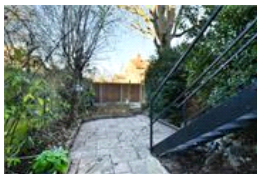
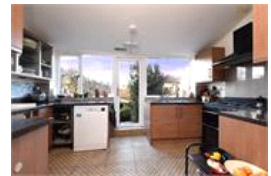
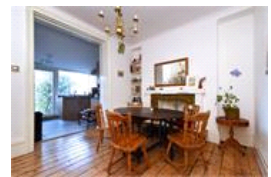
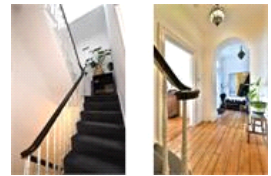


Brockley Rise , SE23 (4 bedroom House)

£1,000,000 (OIEO)



property description

CHAIN FREE SALE! Offering approximately 2132 st ft of internal floor space over and set over four floors is this handsome 4 double bedroom, Victorian townhouse family home with a private rear garden. This imposing house has great kerb appeal offering typical Victorian character and charm. A large sash bay window dominates the raised ground floor and lower ground floors with two further sash windows on the floors above. A walled front garden with a mature hedge shields the house from the street, the entrance to the property is offset on the left hand side via steps leading to the raised ground floor entrance porch with detailed arched masonry overhead. The entrance hall is bright ...

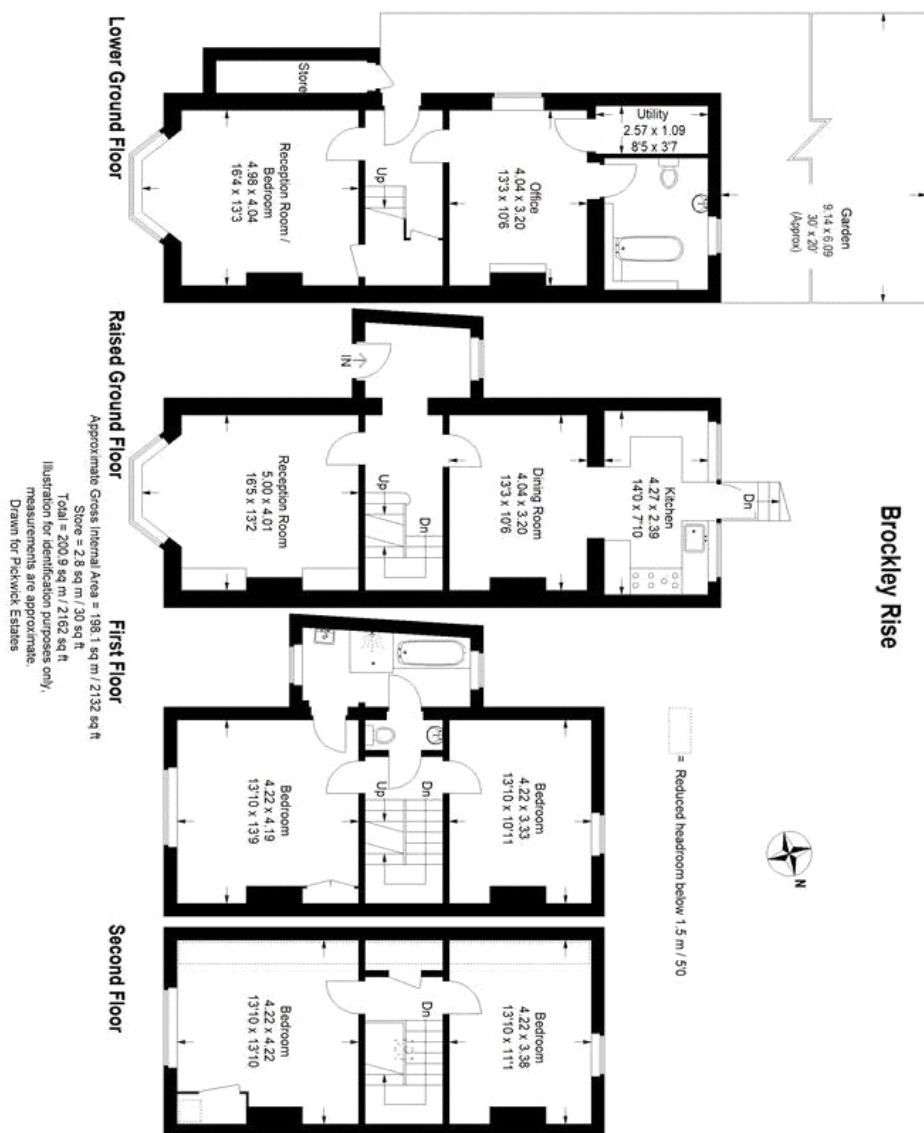
property features

- CHAIN FREE - Large 4/5 double bedroom Victorian townhouse family home offering approx 2132 sf ft
- Set over 4 floors, lower ground, raised ground, first and second floors
- 2 bathrooms and a separate toilet
- Lower ground floor can be a separate annex with its own entrance
- Spacious kitchen dining room with plenty of

ALPS Estates Ltd trading as Pickwick Estates
47 Honor Oak Park Honor Oak
London, SE23 1EA, United Kingdom
Reg No : 7444750
Registered in England

Telephone : 020 3397 1166
Website : <https://www.pickwickestates.co.uk>





For Full EPC information, click [here](#)