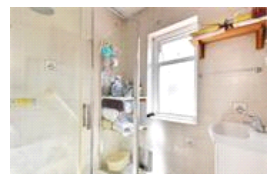
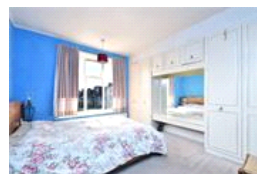
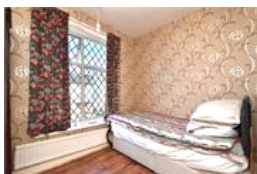
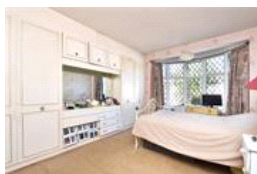
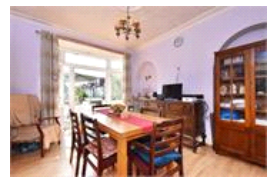
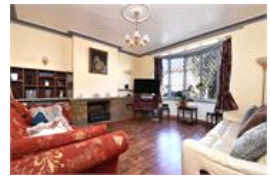


Grierson Road , SE23 (3 bedroom House)

£800,000



property description

VIEWINGS AVAILABLE FROM 11th/12th JULY. Full of potential, this charming 1930s end-of-terrace home in the heart of Honor Oak is ready for its next chapter. Just 160 metres from Honor Oak Park station and the local high street, it offers a generous footprint, three double bedrooms, and a spacious south-east facing garden—plus it's being sold chain free. Set on a wider-than-average plot (approximately 6.5 metres), the home enjoys a 53ft (16m) private rear garden, double glazing throughout, and side return access. The front elevation is instantly appealing, featuring classic curved bay windows on both floors and a walled front garden. A practical front porch leads into the house via original...

property features

- Attractive 1930s end-of-terrace family home offering excellent potential
- Three double bedrooms and a wider-than-average footprint (approx. 6.5m)
- Bright front reception room with bay window and high ceilings
- Spacious rear reception room with French doors leading to the garden

ALPS Estates Ltd trading as Pickwick Estates
47 Honor Oak Park Honor Oak
London, SE23 1EA, United Kingdom
Reg No : 7444750
Registered in England

Telephone : 020 3397 1166
Website : <https://www.pickwickestates.co.uk>





For Full EPC information, click [here](#)