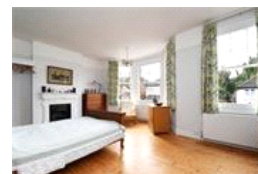
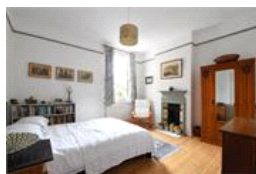
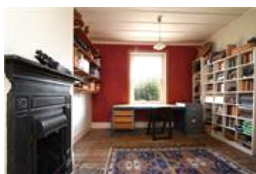
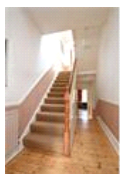
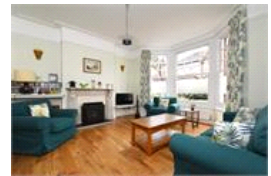


Pearfield Road , SE23 (5 bedroom House)

£1,150,000



property description

VIEWING DAY SATURDAY 22ND MARCH. Offered to the market CHAIN FREE is this handsome 5 double bedroom, semi-detached Edwardian family home, located on this remarkably peaceful cul-de-sac that has a wonderful community of residents. The house offers over 2200 sqft of internal floor space, a massive 60ft (18m) rear garden plus a wide side return and bundles of period character and charm! The house is set back from the street by a walled front garden, through a gate there is a pathway leading to the original front door, the side return has gate leading to a covered storage space down the side return. The striking exposed red brick exterior with original sash bay windows and detailed masonry i...

property features

- CHAIN FREE 5 double bedroom, semi-detached Edwardian family home
- Remarkably peaceful cul-de-sac that has a wonderful community of residents
- A massive 60ft (18m) rear garden plus a wide side return
- Grand double reception room that is interconnected by large internal double doors

ALPS Estates Ltd trading as Pickwick Estates
47 Honor Oak Park Honor Oak
London, SE23 1EA, United Kingdom
Reg No : 7444750
Registered in England

Telephone : 020 3397 1166
Website : <https://www.pickwickestates.co.uk>





For Full EPC Information, click [here](#)