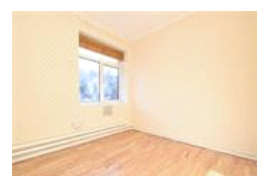
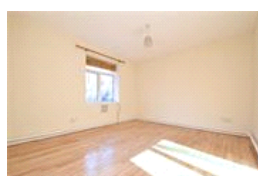
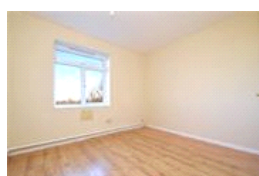
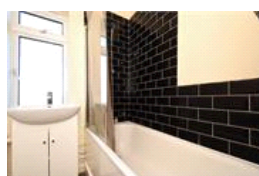
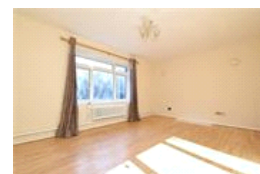
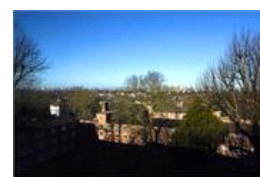
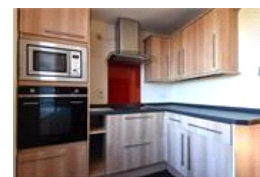
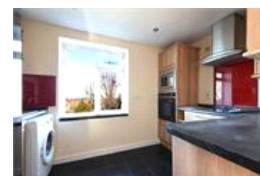


Attleborough Court , SE23 (3 bedroom Flat)

£2,200/month



## property description

Bright and very spacious 3 double bedroom flat on the fourth floor of this well-maintained purpose-built block, offering stunning views of the London Skyline and Dulwich woods. The building benefits from communal gardens, double glazing throughout, entry phone system, allocated parking, pet friendly, a lift and COMMUNAL HOT WATER AND HEATING INCLUDED! The entrance to the flat is on the fourth floor, which is the top floor of the building. There is a generous hallway with storage cupboards leading to all the rooms. At rear of the building is a spacious reception room with green leafy views over Dulwich Woods. The kitchen is a generous size, there are plenty of wall and base mounte...

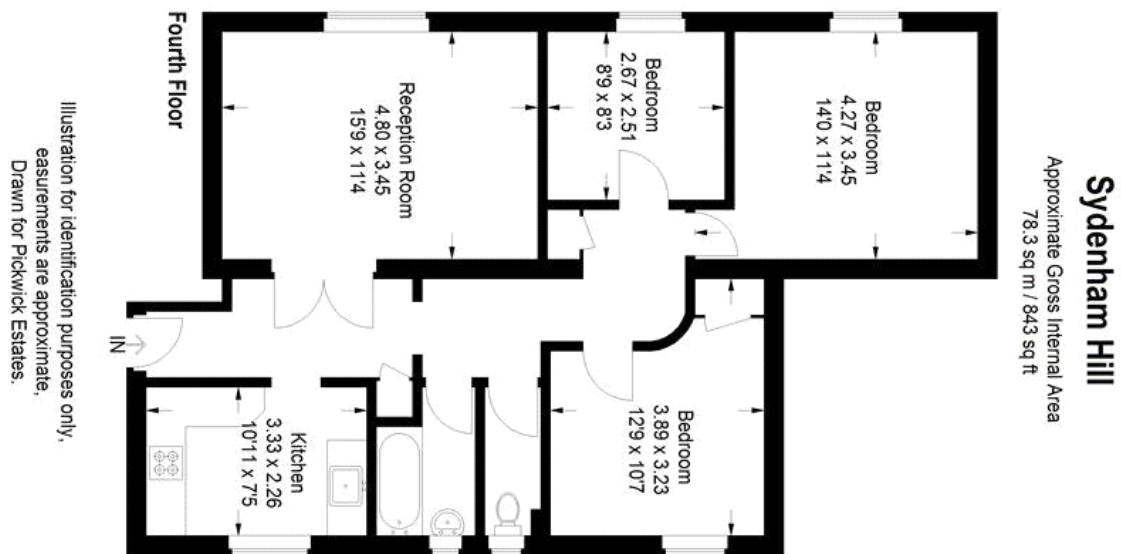
## property features

- 3 double bedroom fourth floor flat within this well maintained modern block
- Offering lovely far reaching views over the London Skyline and Dulwich Woods
- Lift, communal stairwell. allocated parking
- Spacious reception room
- Bathroom and separate toilet
- Communal gardens and access to Dulwich W

ALPS Estates Ltd trading as Pickwick Estates  
47 Honor Oak Park Honor Oak  
London, SE23 1EA, United Kingdom  
Reg No : 7444750  
Registered in England

Telephone : 020 3397 1166  
Website : <https://www.pickwickestates.co.uk>





For Full EPC Information, click [here](#).