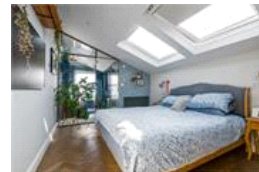
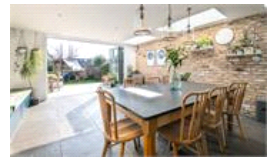


Upland Road , SE22 (5 bedroom House)

£1,900,000



## property description

Stunning Five-Bedroom Victorian Home with Contemporary Elegance & Smart Technology This exquisite five-bedroom Victorian semi-detached family home blends period charm with contemporary style, offering a high-spec finish throughout. Located on the peaceful cul-de-sac end of sought-after Upland Road, this turn-key-ready home features off-street parking, side return access, and a beautifully landscaped 50ft south-facing garden. Thoughtfully extended and renovated, it boasts a stunning open-plan kitchen/dining/reception space, spacious bedrooms, elegant bathrooms, and generous living areas, making it the perfect home for modern family living. Seamlessly integrating modern technology fo...

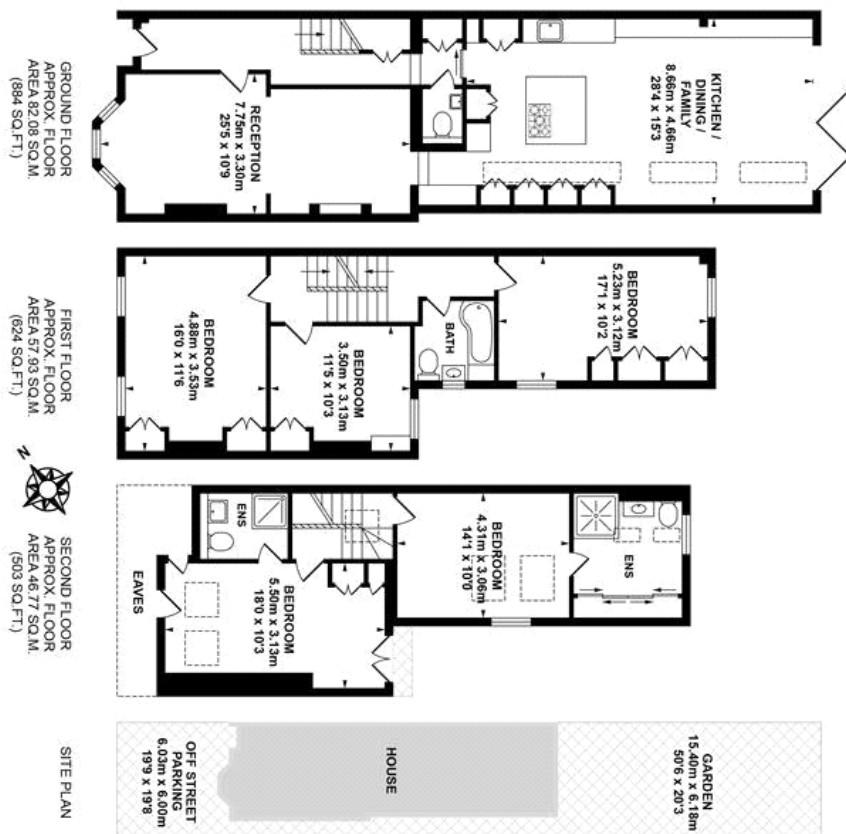
## property features

- Exquisite turn key ready, 5 double bedroom, semi-detached Victorian family home
- Ideally located on the quiet cul de sac part of this popular residential street in the heart of ED
- Beautifully landscaped SOUTH EAST facing rear garden
- Offering over 2000 sq ft of high spec interior decoration

ALPS Estates Ltd trading as Pickwick Estates  
47 Honor Oak Park Honor Oak  
London, SE23 1EA, United Kingdom  
Reg No : 7444750  
Registered in England

Telephone : 020 3397 1166  
Website : <https://www.pickwickestates.co.uk>





TOTAL APPROX. FLOOR AREA 186.78 SQ.M. (2011 SQ.FT.)



Whilst every effort is made to accurately reproduce these floor plans, measurements are approximate, not to scale and for illustrative purposes only.  
Dulwich Energy Assessors Ltd with © London Living www.london-living.com