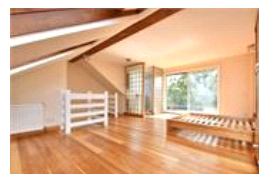
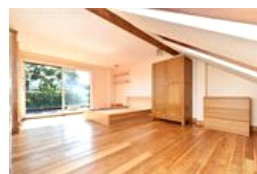
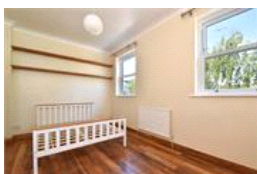
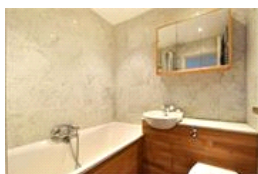
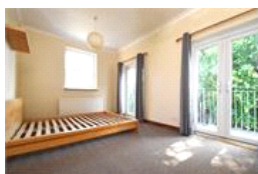
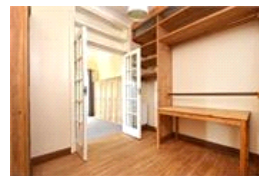
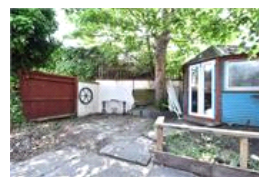
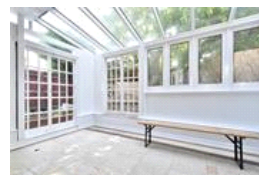
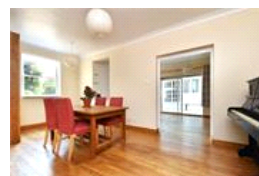


Plough Lane , SE22 (4 bedroom House)

£3,500/month



property description

AVAILABLE NOW - Welcome to your new home at Plough Lane, This newly redecorated four-bedroom apartment offers an exceptional living experience across three floors, making it perfect for families. Nestled in the heart of East Dulwich, it seamlessly blends modern comfort with charming features, creating a warm and inviting atmosphere for you to call home. Upon entering, you are greeted by a modern fitted kitchen and a spacious double reception room that leads to a bright conservatory, providing an ideal space for both entertaining and relaxation. The conservatory opens onto a manageable, low-maintenance garden, offering the perfect setting for outdoor dining and leisure. Additionally, there...

property features

- Four-bedroom End of terrace
- Neutrally decorated throughout & brand new carpets
- Generous living space across three floors
- Master bedroom with en-suite shower room
- Stunning views of the London skyline
- Available now

ALPS Estates Ltd trading as Pickwick Estates
8 Woodward Road Dulwich
London, SE22 8UJ, United Kingdom
Reg No : 4270797
Registered in England

Telephone : 020 3397 1144
Website : <https://www.pickwickestates.co.uk>





Score	Energy rating	Current	Potential
92+	A		
81-91	B		
69-80	C	73 C	83 B
55-68	D		
39-54	E		
21-38	F		
1-20	G		

For Full EPC information, click [here](#)