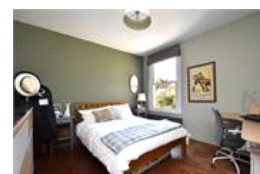
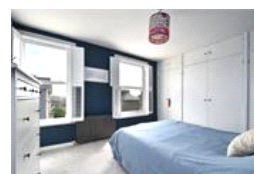
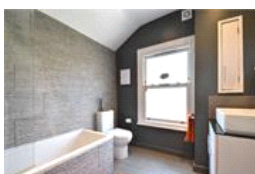
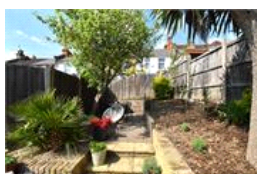
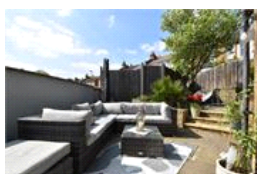
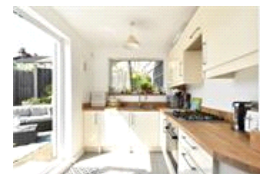
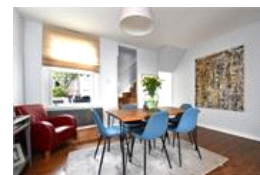


Sunnyside, SE6 (2 bedroom House)

£700,000



property description

VIEWING DAY SATURDAY 10TH MAY. Stylish and elegantly refurbished is this superb freehold 2 double bedroom Victorian semi-detached house with a private Westerly facing rear garden. Sunnyside is a Victorian terrace of houses on Blythe Hill and this house sits at the end of this terrace on the Junction of Ravensbourne Road. A peaceful residential road just around the corner from the green open spaces of Blythe Hill fields - great for weekend activities in the park! The house is set back from the street and offers great curb appeal from its exposed brick facade set behind a low maintenance front garden which also has a bike store. The house benefits from double glazing throughout and...

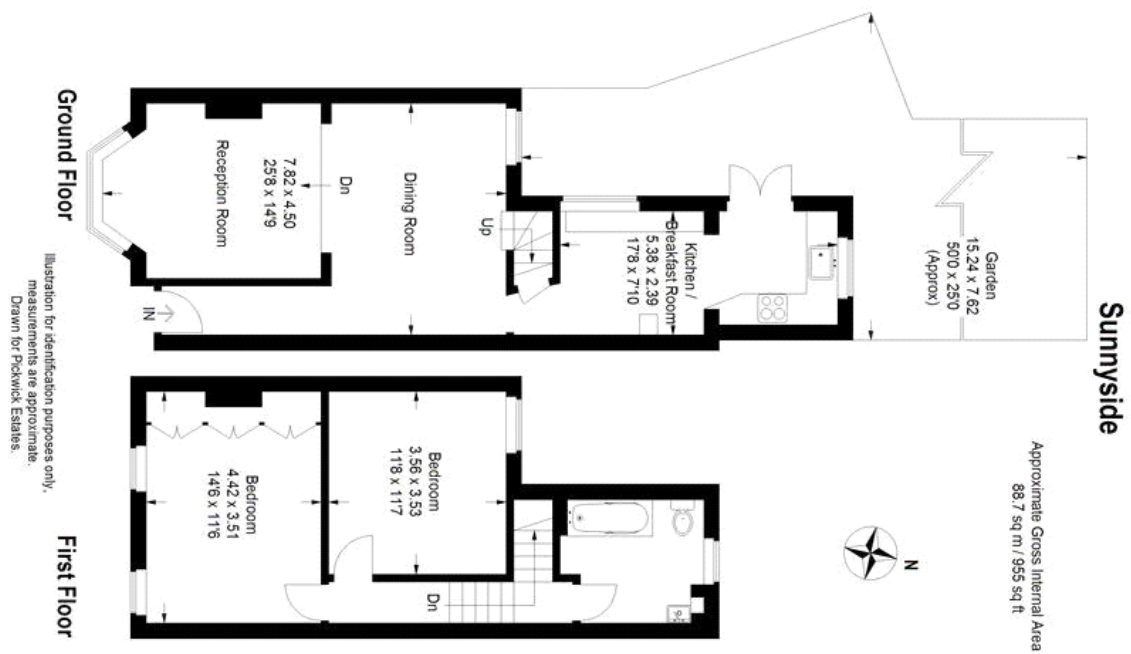
property features

- Superb freehold end of terrace 2 double bedroom Victorian semi-detached house
- Private garden with a westerly facing aspect
- Cosy front reception room lounge
- Dining room
- Fully fitted kitchen
- Stylish family bathroom
- Potential to extend (subject to planning)

ALPS Estates Ltd trading as Pickwick Estates
47 Honor Oak Park Honor Oak
London, SE23 1EA, United Kingdom
Reg No : 7444750
Registered in England

Telephone : 020 3397 1166
Website : <https://www.pickwickestates.co.uk>





For Full EPC Information, click [here](#)